

2021

Hoos Cow

Selling 90
Performance
Driven
Yearling
Angus Bulls

ANGUS BULL SALE



Hoos Core Values 050



Hoos Prosperity 004



Hoos Added Confidence 025



Hoos Hesston 078

Tuesday • **FEBRUARY 16, 2021** • 2 pm (MST)
Gordon Livestock Market, Gordon, NE

(308) 282-1171 or 1-800-924-1171

Judd & Brandy Hoos

Home (308) 327-2179 • Cell (308) 360-3556

Visit our website and view videos & catalog @ www.hooscowangus.com

2021

Hooscow ANGUS BULL SALE

Selling 90
Performance
Driven
Yearling
Angus Bulls

Tuesday • FEBRUARY 16, 2021 • 2 pm (MST)
Gordon Livestock Market, Gordon, NE
(308) 282-1171 or 1-800-924-1171

Auctioneer

Dace Harper (605) 515-1535

Delivery Options

- Take your bull home the day of the sale and receive \$250 off the purchase price of each bull.
- We will deliver the bulls to you beginning April 1st.
- We will keep and feed your bulls until you are ready for them. You will be charged \$2.00 per day beginning April 15th and you will need to pick them up.

Sale Info

A sale order and supplement sheet providing yearling weights, ultrasound data, and scrotal measurements will be posted on our website on www.hooscowangus.com.

Fertility Screened

All bulls will be Screened for fertility and breeding soundness by Dr. Jenny Meyer. In the event that you retest the bull and are not satisfied with the results we will gladly return your money, but we do request that you return the bull to our ranch at your expense.

View Sale Online

Videos should be available February 1st on Superior Livestock Video Auction @ www.superiorlivestock.com. Live bidding available sale day. More information on how to access the sale and videos is on page 2 of the catalog.

Website & Video

Visit our website to view sale book and link to videos @ www.hooscowangus.com

Catalog by JC Ranch Designs - Jessamyn Voss

Lunch

A complementary steak dinner and refreshments will be provided prior to the sale.

Guarantee

Bulls selling for \$3000 or more are guaranteed for 90 days from the first turnout against injury. A credit of the purchase price less \$2500 will be applied towards another bull if available, or if the buyer prefers credit will be provided at next year's sale. The buyer retains the salvage value of the injured bull, but is required to contact us immediately so that inspection of the animal may take place. This is not a mortality insurance policy, nor does it cover mismanagement or neglect. However, if you are unhappy with your bull for any reason, even a couple years down the road, we want to know.

Parentage

All of the bulls have been DNA tested for parentage and the Angus GS genomic score, thus they have a DNA profile on record. This will allow you to test for parentage identification of their progeny if necessary in the future. The genomics have been incorporated into the bulls EPD profile.

Disposition Scoring

We take pride in our cattle having excellent dispositions. Once again, we have attempted to disposition score to assist you in finding the right bulls for your operation. We are changing this slightly this year.
1= Very Docile, identified as bulls that show exceptional calmness
2=Not a problem, but could become restless when singled out. We will attempt to identify and eliminate any bulls that feel that will be flighty or aggressive.

Volume Discount

Buy 3 or more bulls you will receive a 5% discount.

Welcome Cattlemen



We would like to invite you to the 2021 HoosCow Angus Bull sale! Hooscow is a family owned and operated angus seed stock operation dedicated to your success. We began buying registered cows in 1999. During this period of time, we have worked hard to develop our “breeding program” by consistently using core genetics and applying INTENSE selection pressure. You are not just buying a bull; you are investing in predictable Hooscow genetics from a program that offers you transparency and support.

Mission Statement

Hooscow Angus is a performance driven angus seed stock ranch focused on building cattle that add value to every segment of the industry, leading to the utmost success of our customers. Although we consider EPD's in our selection, we rely heavily on selection pressure in our environment. We realize that our role as a seed stock provider is very important to your success. We are very careful in our selection, honest in our presentation, and sincere in our word.

Bull Development

We winter and calve the cows at our place two miles east of Rushville. In the spring, the bull pairs were hauled to pasture where they spent the summer. These bulls have not been creep fed or supplemented while on the cow because we do not want to create an illusion in our maternal selection process. The bulls were weaned in September. They are developed in a small pasture in front of our house. We target these bulls to gain 3.25lbs per day. All the bulls in this sale have been genomic tested using the Angus GS.

Our Embryo Transfer Program

We have invested heavily into the world of Embryo Transfer by implanting over five hundred embryos over the last twenty years. We have mass produced cows that have excelled for us and brought in some of the breeds most decorated genetics. The embryo calves are raised by commercial cows, thus individual data can be misleading when used in comparison.

Your Bull Selection

We are often asked “what is your best bull?” It vaguely depends on what you have and what you are trying to accomplish. This is a set of bulls that offers different strengths. Our goal is to get you the bull you desire and hopefully the information in this catalog will provide the tools you need to select the right bull for your business. This is the fourth year with a disposition score to better assist your selection. If you have any questions or need more information don't hesitate to give us a call.

Judd & Brandy,
Hayden, Hannah & Hadleigh Hoos
Home (308) 327-2179 • Cell (308) 360-3556
www.hooscowangus.com



Dollar value indexes, or **\$Values**, are a tool used to select for several traits at once based on a specific breeding objective. An economic index approach takes into account genetic and economic values as well as the relationships between traits to select for profit.

American Angus Association \$Value Indexes

Maternal Weaned Calf Value (\$M), an index expressed in dollars per head, predicts profitability differences in progeny due to genetics from conception to weaning. \$M is built off of a self-replacing herd model where commercial cattlemen replace 25% of their breeding females in the first generation and 20% in subsequent generations. Remaining cull females and all male progeny are sold as feeder calves. Increased selection pressure on \$M aims to decrease overall mature cow size and improve foot structure and fertility while maintaining weaning weights consistent with today's production.

Weaned Calf Value (\$W), an index expressed in dollars per head, provides the expected difference in future progeny preweaning performance from birth to weaning. \$W assumes that producers retain 20% of their female progeny for replacements and sell the rest of their cull female and male progeny as feeder calves. Over time, increased selection pressure on \$W will increase pre-weaning growth through additional weaning weight and maternal milk with expenses adjustment for mature size and maternal milk.

Cow Energy Value (\$EN), an index expressed in dollars per cow per year, assesses differences in cow energy requirements as an expected dollar savings difference in future daughters of sires. A larger value is more favorable when comparing two animals (more dollars saved on feed energy expenses). Components for computing \$EN savings differences include lactation energy requirements and energy costs associated with differences in mature cow size.

Feedlot Value (\$F), an index expressed in dollars per head, is the expected average difference in future progeny performance for postweaning merit compared to progeny of other sires. The underlying objective assumes commercial producers will retain ownership of cattle through the feedlot phase and sell fed cattle on a carcass weight basis with no considerations of premiums or discounts for quality and yield grade.

Grid Value (\$G), an index expressed in dollars per carcass, is the expected average difference in future progeny performance for carcass grid merit, including quality and yield grade attributes, compared to progeny of other sires.

Beef Value (\$B), an index expressed in dollars per carcass, facilitates simultaneous multi-trait genetic selection for feedlot and carcass merit. \$B represents the expected average differences in the progeny post-weaning performance and carcass value compared to progeny of other sires. This index assumes commercial producers wean all male and female progeny, retain ownership of these animals through the feedlot phase and market these animals on a quality-based carcass grid.

EPDS DIRECTLY INCORPORATED INTO EACH \$VALUE

TRAIT	MATERNAL			TERMINAL		
	\$M	\$W	\$EN	\$F	\$G	\$B
CED	✓					
BW		✓				
WW	✓	✓				
YW				✓		✓
CEM	✓					
Milk	✓	✓	✓			
MW	✓	✓	✓			
DOC	✓					
HP	✓					
Claw	✓					
Angle	✓					
DMI				✓		✓
CW				✓	✓	✓
RE					✓	✓
Marb					✓	✓
Fat					✓	✓

We want to create awareness and encourage you to explore a revamped program called **Angus Link**. It offers you the ability to continue your existing and established marketing plan, thus enhancing it by,

- Differentiating your cattle on sale day by certifying your genetics, verifying your management practices and more.
- Creating substantial exposure to buyers by using weekly emails and social media, thus reaching cattle feeders and replacement heifer buyers nationwide looking specifically for elite angus feeder cattle with value added potential for them.

Nearly all our cattle score extremely well in the current \$values analysis. Some excel for the Maternal indexes, some excel feed lot value, and some balance both. We have transferred nearly every registered Angus bull that we have sold over the last fifteen years, thus we can and will assist you in providing your Angus Genetic profile. Also know that all Angus AI genetics that you have used can also be added to your herds value and we can also assist you in this process as well. We are more than willing to discuss or assist you in exploring this potential marketing enhancement.

- Judd Hoos

YOU'VE DONE THE WORK.

Get paid for it.

You've invested in good genetics.
You've kept all the records.

AngusLinkSM combines USDA Process Verified Programs with a Genetic Merit Scorecard that gives buyers confidence in your calves. From age and source verification to cattle care and handling, you choose which programs make the most sense for you.

Group Age & Source: Verifies the group age and source of the cattle

Angus-Sired Genetics: Verifies calves are sired by 100% registered Angus bulls

Non-Hormone Treated Cattle: Verifies cattle have never received hormones

NeverEver³: No antibiotics, no hormones, no animal by-products ever

Cattle Care & Handling: Documents proper management, demonstrates quality commitment

Calf Management: Documents preventative health program

Genetic Merit ScorecardSM: Measures the genetic merit of calves for feedlot performance and carcass merit.

**Optional, not part of the PVP claims*

Easy and affordable, our customer service representatives walk you through the process.

ANGUSLINKSM

VALUE ADDED PROGRAMS

Call us at 816-383-5100 to sign up or
visit AngusLink.com for more information.



LIVE SALE AUCTION, BIDDING & VIDEOS

MUST REGISTER PRIOR TO
BIDDING

PLEASE DO SO BEFORE SALE
STARTS

How to see the videos of the bulls

There are 2 places to view the sale broadcast live on the internet: WWW.SUPERIORLIVESTOCK.COM or WWW.SUPERIORCLICKTOBID.COM. Just go to the home page of either website and select the auction. If you just want to watch the auction on your computer, smartphone or tablet go to WWW.SUPERIORLIVESTOCK.COM, but if you want to bid over the computer you must go to WWW.SUPERIORCLICKTOBID.COM. Remember you can call in to bid on the internet, but you must be a member of www.superiorclicktobid.com to "clickto-bid". Your computer must have Flash Media Player installed for this website to view the auction. If you have any questions, please call the Superior Productions office at 800-431-4452.

How to participate as an absentee buyer

We have made preparations to bid and buy livestock through Superior Productions' "Call or Click-To-Bid" service for those unable to attend in person on sale day. Please note that all of the lots in the sale will also be available for viewing online prior to sale day at WWW.SUPERIORLIVESTOCK.COM.

Here is how it works

• TURN IN BIDS OVER THE PHONE.

This is our traditional method of buying livestock. To get started simply go online to WWW.SUPERIORLIVESTOCK.COM and click on the tab titled "Register for a Buyer Number". Select the registration form for Superior Productions and print the registration form, fill it out and fax it in to Superior Productions at (817) 378-3380 with a signature on it, or scan and email the form to info@superiorauction.com. You can also mail it in to the address provided on the form. Upon receipt of this information Superior will call you with a buyer's number and the bid line phone number that you will use on sale day to place bids over the phone.

• CLICK-TO-BID.

This is Superior's online bidding platform for cattle buying. Please note that high speed internet is required – this is not for dial-up or satellite internet. Registration is free, but you must become a member of WWW.SUPERIORCLICKTOBID.COM to sign up. Becoming a member is easy - just go to the homepage of WWW.SUPERIORCLICKTOBID.COM and follow the out-lined steps to get started. Input your information and select a username and password. You will receive an e-mail confirming you are a member. From that point forward you just have to sign in and select the sale you would like to register for and once approved you will receive an e-mail confirming which sale you are now registered for.

JUDD HOOS

INDEPENDENT SALES REPRESENTATIVE

- SELECT SIRES
- ACCELERATED GENETICS
- ST GENETICS
- ALTA GENETICS

FULL SERVICE AI TECHNICIAN

PROVIDING SERVICE TO OUR LOCAL PRODUCERS

S SINAMCO MILLS

Fellow Cattlemen,

It has been a privilege this year to work with the Hoos family on their bull development program. Developing bulls to provide long-term value for ranchers is something Judd takes very seriously. You can buy these bulls with confidence that they have been developed correctly and are backed with integrity. The bulls were developed on a complete pelleted feed consisting mainly of byproduct ingredients including pea hulls and dried distillers grains. The bull pellet is high fiber, low starch, and fully fortified. Along with the pellet, the bulls were fed long stem hay.

When evaluating the condition and performance of these bulls, please keep in mind they have done it without the benefit of corn silage, wet byproduct feeds, or corn. The bull lots at Hooscow give the bulls a lot of room to move, and they are active and athletic. We expect these bulls to pull their weight in the breeding pasture as yearlings, and thus they should start returning your investment in year one. Like any other young bull, they are going to lose some weight during the breeding season, but we believe they have been developed in such a manner that with some rest and minimal supplementation they will bloom right back up and winter well.

Thank you to the whole crew at Hooscow for the opportunity to be a part of their team, it has been a pleasure to work with a family operation completely devoted to doing the right thing for their cattle and their customers. See you at the sale.

Jeremy Martin, Ph. D.
Great Plains Livestock Consulting, Inc.



WESTCO
FEED

Serving the Wyo-Braska Region
with a variety of feed options

Feed Division Manager, Jared Mracek
Call: (308) 760-0909





Ideal 8561 of 4545 4704

A Ideal 8561 of 4545 4704

02/08/2008 • REG: #16137281 • 8561

IDEAL 7451 OF 8103 4465
IDEAL 4545 OF 7451 6224
IDEAL 6224 OF 306 4231

IDEAL 8103 OF ELDO 5110 5213
IDEAL 4465 OF 6807 4286

B F RAINDANCER 012 306
IDEAL 4231 OF 033 1467

IDEAL 2300 OF T510 3401
IDEAL 4704 OF 2300 2358
IDEAL 2358 OF 7573 759

S S TRAVELER 6807 T510
IDEAL 3401 OF 1418 65

IDEAL 7573 OF 544 988
IDEAL 759 OF 544 5307

BW	WW	YW	HP	MILK	MARB	REA	SM	SF	SG	SB
+4.0	+41	+67	+12.2	+31	-.06	+.19	+58	+58	+15	+74

We purchased Ideal 8561 from Dan Duffy at 9 years of age. He bred cows naturally for us here this summer at the age of 12. His longevity says it all. He offers structure, soundness, an excellent disposition, and fertility. We used him in 1 flush and the remainder of his progeny have been all natural service. Look up his video on our website hooscowangus.com.

000 Hoos Ideal Cocktail 000

01/24/20 • REG: #19875862 • 000B

IDEAL 4545 OF 7451 6224
IDEAL 8561 OF 4545 4704
IDEAL 4704 OF 2300 2358

IDEAL 7451 OF 8103 4465
IDEAL 6224 OF 306 4231

IDEAL 2300 OF T510 3401
IDEAL 2358 OF 7573 759

S A V HARVESTOR 0338
S A V EMBLYNETTE 5483

S A V INTERNATIONAL 2020
HOOS QUEEN ELLA 752
IDEAL 507 OF 7451 806

IDEAL 7451 OF 8103 4465
IDEAL 806 OF 5201 503

BW	WW	YW	HP	MILK	MARB	REA	SM	SF	SG	SB	ACT BW
+3.4	+38	+73	+11.7	+26	+.08	+.28	+43	+62	+22	+84	80

- Embryo
- Moderate framed and massive

ADJ 205	669
DISP	2



Hoos Ideal Cocktail 000

001 Hoos Encore 001

01/25/20 • REG: #19877987 • 001B

IDEAL ENCORE OF 9524 LADY
HOOS ENCORE 857
HOOS QUEEN ELLA 685

IDEAL 9524 OF 5570 6809
IDEAL 3020 OF SE 6X7 LADY

IDEAL 332 OF 049 8221
IDEAL 608 OF 338 022

S A V REGISTRY 2831
IDEAL 608 OF 338 022

HOOS REGISTRY 511
HOOS BLACKBIRD 828
HOOS BLACKBIRD 500

IDEAL 0748 OF 332 JILT
IDEAL 501 OF 9126 319

BW	WW	YW	HP	MILK	MARB	REA	SM	SF	SG	SB	ACT BW
-2.6	+52	+105	+12.1	+44	+.43	+.26	+62	+85	+38	+123	64

- Heifer bull
- Ranks in the top 10% for \$Wean
- A bigger outlined bull

ADJ 205	678
DISP	2



Hoos Encore 001

002 Hoos Ideal Cocktail 002

01/25/20 • REG: #19875863 • 002B

IDEAL 4545 OF 7451 6224
IDEAL 8561 OF 4545 4704
IDEAL 4704 OF 2300 2358

IDEAL 7451 OF 8103 4465
IDEAL 6224 OF 306 4231

IDEAL 2300 OF T510 3401
IDEAL 2358 OF 7573 759

S A V INTERNATIONAL 2020
HOOS QUEEN ELLA 752
IDEAL 507 OF 7451 806

S A V HARVESTOR 0338
S A V EMBLYNETTE 5483

IDEAL 7451 OF 8103 4465
IDEAL 806 OF 5201 503

BW	WW	YW	HP	MILK	MARB	REA	SM	SF	SG	SB	ACT BW
+5.1	+57	+97	+12.2	+19	+0	+.35	+41	+79	+21	+99	101

- Embryo
- Powerful bull that will add muscle and depth

ADJ 205	706
DISP	2

The 8561 x 752 Flush

I need to tell the story on this mating. 752 was a flush mate to the powerful SAV International x Ideal 507 flush that we featured in our 2018 bull sale. Like her brothers and sisters, 752 was phenotypically fantastic. She came up open as a first calf heifer. We had just purchased the 8561 bull. We were out of embryos and Brandy persuaded me to try to flush 752 to Ideal 8561. She produced ten frozen eggs. Eight of them stuck and one of the pregnancies yielded twins. We ended up with nine bulls and no heifers. As expected, they are attractive and powerful. We just wanted to be transparent, thus sharing with you what we did here.

003 Hoos Ideal Cocktail 003

01/27/20 • REG: #19875864 • 003B

IDEAL 4545 OF 7451 6224
IDEAL 8561 OF 4545 4704
IDEAL 4704 OF 2300 2358

IDEAL 7451 OF 8103 4465
IDEAL 6224 OF 306 4231
IDEAL 2300 OF T510 3401
IDEAL 2358 OF 7573 759

S A V INTERNATIONAL 2020
HOOS QUEEN ELLA 752
IDEAL 507 OF 7451 806

S A V HARVESTOR 0338
S A V EMBLYNETTE 5483
IDEAL 7451 OF 8103 4465
IDEAL 806 OF 5201 503

BW	WW	YW	HP	MILK	MARB	REA	SM	SF	SG	SB	ACT BW
+3.9	+56	+95	+9.8	+15	+15	+0	+34	+60	+17	+77	95
											ADJ 205
											672
											DISP
											2

- Embryo
- Lots of depth



Hoos Ideal Cocktail 003

004 Hoos Prosperity 004

01/30/20 • REG: #19875865 • 004B

S A V PROVIDENCE 6922
S A V PROSPERITY 9131
S A V EMBLYNETTE 3123

S A V 004 PREDOMINANT 4438
S A V MAY 7238

B C C BUSHWACKER 41-93
S A V EMBLYNETTE 1177

IDEAL 7451 OF 8103 4465
IDEAL 507 OF 7451 806
IDEAL 806 OF 5201 503

IDEAL 8103 OF ELDO 5110 5213
IDEAL 4465 OF 6807 4286

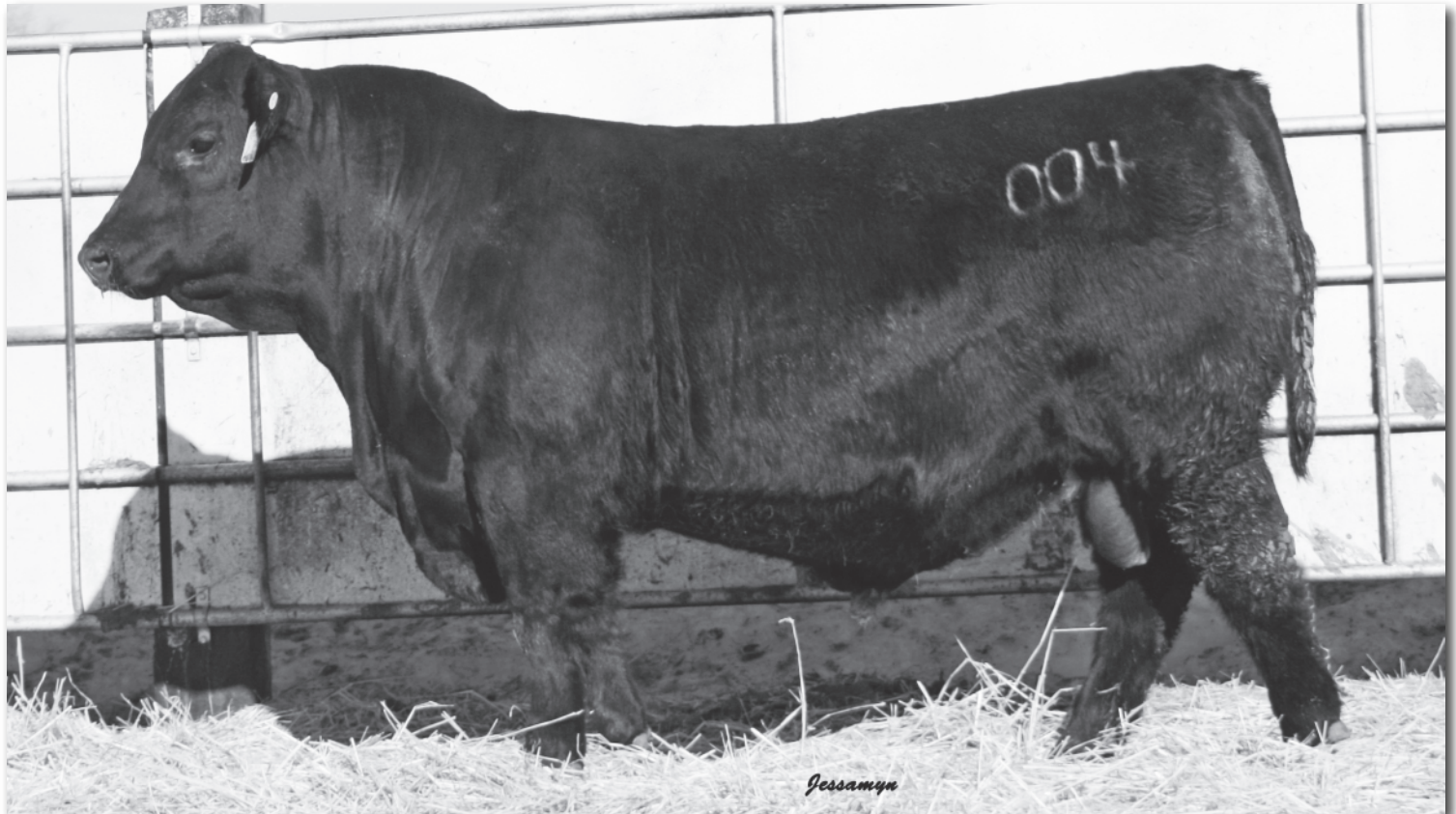
IDEAL 5201 OF 033 076
IDEAL 503 OF 0340 6100

BW	WW	YW	HP	MILK	MARB	REA	SM	SF	SG	SB	ACT BW
+2.2	+65	+110	+13.6	+26	+36	+62	+78	+70	+40	+110	80
											ADJ 205
											689
											DISP
											1

- This embryo bull is a real chunk
- Collected a full brother from last year's sale
- Ranks in the top 25% for \$Wean



Hoos Ideal Cocktail 003



Hoos Prosperity 004

B E&B New Addition 608

01/15/2016 • REG: #18548853 • 608

CONNEALY TOBIN
CONNEALY CONFIDENCE 0100 BECCA GALA OF CONANGA 8281
CONNEALY CONFIDENCE PLUS
ELBANNA OF CONANGA 1209 CONNEALY CONSENSUS
ELBASTA OF CONANGA 9703

SITZ DASH 10277
E&B LADY DASH 4152
E&B LADY RIGHT ANSWER 296
CONNEALY RIGHT ANSWER 746
E&B LADY POWER ALLIANCE 042

BW	WW	YW	HP	MILK	MARB	REA	SM	SF	SG	SB
-1.3	+48	+91	+14.7	+36	+82	+75	+78	+77	+59	+136

We used New Addition exclusively on our first calf heifers. He proved to be sure fire calving ease for us. His pedigree stacks known cow makers and it is reflected with his S maternal ranking in the top 5% of the breed. He also ranks in the top 20% of the breed for marbling.



E&B New Addition 608

005 Hoos Ideal Cocktail 005

01/30/20 • REG: #19875866 • 005B

IDEAL 4545 OF 7451 6224
IDEAL 8561 OF 4545 4704
IDEAL 4704 OF 2300 2358

IDEAL 7451 OF 8103 4465
IDEAL 6224 OF 306 4231
IDEAL 2300 OF T510 3401
IDEAL 2358 OF 7573 759

S A V INTERNATIONAL 2020
HOOS QUEEN ELLA 752
IDEAL 507 OF 7451 806

S A V HARVESTOR 0338
S A V EMBLYNETTE 5483

IDEAL 7451 OF 8103 4465
IDEAL 806 OF 5201 503

BW	WW	YW	HP	MILK	MARB	REA	SM	SF	SG	SB	ACT BW
+5.6	+62	+105	+12.1	+23	+38	+38	+37	+66	+36	+102	94

- Embryo
- Just like his brothers, deep sided and heavy muscled

ADJ 205
655
DISP
2



Hoos Ideal Cocktail 005

006 Hoos Ideal Cocktail 006

01/30/20 • REG: #19875868 • 006B

IDEAL 4545 OF 7451 6224
IDEAL 8561 OF 4545 4704
IDEAL 4704 OF 2300 2358

IDEAL 7451 OF 8103 4465
IDEAL 6224 OF 306 4231
IDEAL 2300 OF T510 3401
IDEAL 2358 OF 7573 759

S A V INTERNATIONAL 2020
HOOS QUEEN ELLA 752
IDEAL 507 OF 7451 806

S A V HARVESTOR 0338
S A V EMBLYNETTE 5483

IDEAL 7451 OF 8103 4465
IDEAL 806 OF 5201 503

BW	WW	YW	HP	MILK	MARB	REA	SM	SF	SG	SB	ACT BW
+2.8	+48	+87	+14.7	+33	+03	+43	+69	+63	+22	+85	83

- Embryo twin with 007
- Sound and massive

ADJ 205
645
DISP
2

008 Hoos Added Confidence 008

01/30/20 • REG: #19875869 • 008B

E&B NEW CONNEALY CONFIDENCE PLUS
ADDITION 608
E&B LADY DASH 4152

CONNEALY CONFIDENCE 0100
ELBANNA OF CONANGA 1209

SITZ DASH 10277
E&B LADY RIGHT ANSWER 296

HOOS LADY 823
IDEAL 332 OF 049 8221
IDEAL 6313 OF 2Q23 4633

IDEAL 049 OF F506 6375
IDEAL 8221 OF 5439 4517

SINCLAIR OPEN RANGE 2Q23
IDEAL 4633 OF 452 281

BW	WW	YW	HP	MILK	MARB	REA	SM	SF	SG	SB	ACT BW
-1.6	+49	+95	+10.8	+30	+85	+51	+69	+80	+57	+136	70

- Heifer bull
- Ranks in the Top 25% for \$Maternal, 35% for \$Wean & 25% for \$Grid

ADJ 205
595
DISP
2

007 Hoos Ideal Cocktail 007

01/30/20 • REG: #19875868 • 007B

IDEAL 4545 OF 7451 6224
IDEAL 8561 OF 4545 4704
IDEAL 4704 OF 2300 2358

IDEAL 7451 OF 8103 4465
IDEAL 6224 OF 306 4231
IDEAL 2300 OF T510 3401
IDEAL 2358 OF 7573 759

S A V INTERNATIONAL 2020
HOOS QUEEN ELLA 752
IDEAL 507 OF 7451 806

S A V HARVESTOR 0338
S A V EMBLYNETTE 5483

IDEAL 7451 OF 8103 4465
IDEAL 806 OF 5201 503

BW	WW	YW	HP	MILK	MARB	REA	SM	SF	SG	SB	ACT BW
+2.9	+48	+87	+14.6	+32	+03	+42	+69	+63	+22	+85	80

- Embryo twin with 006
- Offers moderate birth weight with lots of dimension

ADJ 205
668
DISP
2



Hoos Added Confidence 008

009 Hoos Added Confidence 009

01/31/20 • REG: #19875870 • 009B

E&B NEW CONNEALY CONFIDENCE PLUS
ADDITION 608
E&B LADY DASH 4152

CONNEALY CONFIDENCE 0100
ELBANNA OF CONANGA 1209
SITZ DASH 10277
E&B LADY RIGHT ANSWER 296

HOOS ALMIGHTY 238
HOOS HAZEL 844
ALC HAZEL P92P

MARX ALMIGHTY 811 3KG
IDEAL 608 OF 338 022
H A R B HIGH PLAINS 975 JH
ALC HAZEL L12L

BW	WW	YW	HP	MILK	MARB	REA	SM	SF	SG	SB	ACT BW
+5	+59	+102	+10.0	+37	+42	+49	+52	+75	+38	+113	73
											ADJ 205
											644
											DISP
											1

- Heifer bull
- Ranks in the top 10% for \$Wean

010 Hoos Ideal Cocktail 010

01/31/20 • REG: #19875871 • 010B

IDEAL 4545 OF 7451 6224
IDEAL 8561 OF 4545 4704
IDEAL 4704 OF 2300 2358

IDEAL 7451 OF 8103 4465
IDEAL 6224 OF 306 4231
IDEAL 2300 OF T510 3401
IDEAL 2358 OF 7573 759

S A V INTERNATIONAL 2020
HOOS QUEEN ELLA 752
IDEAL 507 OF 7451 806

S A V HARVESTOR 0338
S A V EMBLYNETTE 5483
IDEAL 7451 OF 8103 4465
IDEAL 806 OF 5201 503

BW	WW	YW	HP	MILK	MARB	REA	SM	SF	SG	SB	ACT BW
+1.3	+49	+78	+14.6	+31	+10	+46	+74	+60	+26	+85	78
											ADJ 205
											618
											DISP
											2

- Embryo
- The 8561 x 752 brothers are consistent

011 Hoos Encore 011

01/31/20 • REG: #19875942 • 011B

IDEAL ENCORE OF 9524 LADY
HOOS ENCORE 857
HOOS QUEEN ELLA 685

IDEAL 9524 OF 5570 6809
IDEAL 3020 OF SE 6X7 LADY
IDEAL 332 OF 049 8221
IDEAL 608 OF 338 022

S A V PROSPERITY 9131
HOOS LADY 815
IDEAL 6313 OF 2Q23 4633

S A V PROVIDENCE 6922
S A V EMBLYNETTE 3123
SINCLAIR OPEN RANGE 2Q23
IDEAL 4633 OF 452 281

BW	WW	YW	HP	MILK	MARB	REA	SM	SF	SG	SB	ACT BW
+3.0	+78	+145	+10.1	+35	+54	+48	+56	+121	+44	+165	90
											ADJ 205
											812
											DISP
											2

- Top 1% for \$Feed, 10% \$Beef and 3% \$Wean
- Had a 125 weaning ratio out of a first calf heifer with an excellent phenotype

012 Hoos Beast Mode 012

02/01/20 • REG: #19875872 • 012B

S A V 707 RITO 9969
DOUBLE R BAR RITO Y188
WHITESTONE LADY X087

RITO 707 OF IDEAL 3407 7075
BR POLLY 8077-472
G A R PREDESTINED
SINCLAIR LADY 2P61 4465

H A R B HIGH PLAINS 975 JH
ALC HAZEL P92P
ALC HAZEL L12L

SITZ ALLIANCE 6595
JUANADA ERICA 9024 H A R B
S V F BANDOLIER
ALC HAZEL K14H

BW	WW	YW	HP	MILK	MARB	REA	SM	SF	SG	SB	ACT BW
+2.3	+42	+84	+9.9	+34	+21	+77	+53	+78	+32	+110	80
											ADJ 205
											635
											DISP
											2

- Embryo Beast Mode x P92P
- Lots of presence
- P92P cow finished her career weaning 9 calves at 106

014 Hoos Encore 014

02/02/20 • REG: #19875943 • 014B

IDEAL ENCORE OF 9524 LADY
HOOS ENCORE 857
HOOS QUEEN ELLA 685

IDEAL 9524 OF 5570 6809
IDEAL 3020 OF SE 6X7 LADY
IDEAL 332 OF 049 8221
IDEAL 608 OF 338 022

S A V PROSPERITY 9131
HOOS LADY 816
IDEAL 6313 OF 2Q23 4633

S A V PROVIDENCE 6922
S A V EMBLYNETTE 3123
SINCLAIR OPEN RANGE 2Q23
IDEAL 4633 OF 452 281

BW	WW	YW	HP	MILK	MARB	REA	SM	SF	SG	SB	ACT BW
-.2	+56	+105	+13.8	+35	+44	+27	+63	+76	+38	+115	75
											ADJ 205
											696
											DISP
											2

- Heifer bull
- Good bull that ranks in the top 20% for \$Wean

015 Hoos None Better 015

02/02/20 • REG: #19875873 • 015B

CONNEALY CONSENSUS 7229
RIVERBEND NONE BETTER Y095
CCC BLACKBIRD 9101

CONNEALY CONSENSUS
BLUE LILLY OF CONANGA 16
S S OBJECTIVE T510 0T26
RIVERBEND BLACKBIRD 4301

S A V INTERNATIONAL 2020
HOOS QUEEN ELLA 752
IDEAL 507 OF 7451 806

S A V HARVESTOR 0338
S A V EMBLYNETTE 5483
IDEAL 7451 OF 8103 4465
IDEAL 806 OF 5201 503

BW	WW	YW	HP	MILK	MARB	REA	SM	SF	SG	SB	ACT BW
+3.0	+62	+103	+11.4	+20	+51	+26	+62	+70	+40	+109	103
											ADJ 205
											636
											DISP
											1

- None Better embryo



Hoos Encore 011



Hoos Beast Mode 012

016

Hoos Encore 016

02/02/20 • REG: #19875874 • 016B

IDEAL ENCORE OF 9524 LADY
HOOS ENCORE 857
HOOS QUEEN ELLA 685

IDEAL 9524 OF 5570 6809
IDEAL 3020 OF SE 6X7 LADY

IDEAL 332 OF 049 8221
IDEAL 608 OF 338 022

HOOS REGISTRY 511
HOOS PROUD LASSIE 825
HOOS PROUD LASSIE 545

S A V REGISTRY 2831
IDEAL 608 OF 338 022

MARX ALMIGHTY 811 3KG
HOOS PROUD LASSIE 211

BW	WW	YW	HP	MILK	MARB	REA	SM	SF	SG	SB	ACT BW
+7	+64	+115	+10.1	+27	+52	+50	+46	+92	+49	+141	72
											ADJ 205
											697
											DISP
											2

- Will work on larger framed heifers
- Ranks in the top 25% \$Wean, 25% \$Feed and 35% \$Beef
- Had a navel infection as a calf

018

Hoos Ideal Cocktail 018

02/04/20 • REG: #19875875 • 018B

IDEAL 4545 OF 7451 6224
IDEAL 8561 OF 4545 4704
IDEAL 4704 OF 2300 2358

IDEAL 7451 OF 8103 4465
IDEAL 6224 OF 306 4231

IDEAL 2300 OF T510 3401
IDEAL 2358 OF 7573 759

S A V INTERNATIONAL 2020
HOOS QUEEN ELLA 752
IDEAL 507 OF 7451 806

S A V HARVESTOR 0338
S A V EMBLYNETTE 5483

IDEAL 7451 OF 8103 4465
IDEAL 806 OF 5201 503

BW	WW	YW	HP	MILK	MARB	REA	SM	SF	SG	SB	ACT BW
+4.8	+62	+109	+10.8	+22	+11	+4.8	+45	+78	+25	+103	98
											ADJ 205
											717
											DISP
											2

- Embryo
- This bull caught my eye all summer long
- Really thick topped and attractive

019

Hoos Encore 019

02/04/20 • REG: #19875876 • 019B

IDEAL ENCORE OF 9524 LADY
HOOS ENCORE 857
HOOS QUEEN ELLA 685

IDEAL 9524 OF 5570 6809
IDEAL 3020 OF SE 6X7 LADY

IDEAL 332 OF 049 8221
IDEAL 608 OF 338 022

JGM CORE VALUES 5G11
HOOS QUEEN ELLA 858
HOOS 183 OF MYT 608

GDAR GAME DAY 449
JGM PROUD ERIKA 1H1

MARX 0211 DBL G NEW B 713
IDEAL 608 OF 338 022

BW	WW	YW	HP	MILK	MARB	REA	SM	SF	SG	SB	ACT BW
+2.4	+66	+114	+8.8	+31	+0	+4.6	+51	+88	+20	+108	85
											ADJ 205
											729
											DISP
											2

- Top 15% \$Wean, 35% \$Feed
- Good bull that will add growth

020

Hoos Compass 020

02/04/20 • REG: #19875877 • 020B

EF COMMANDO 1366
BALDRIDGE COMPASS C041
BALDRIDGE ISABEL Y69

EF COMPLEMENT 8088
RIVERBEND YOUNG LUCY W1470

STYLES UPGRADE J59
BALDRIDGE ISABEL T935

DOUBLE R BAR RITO Y188
HOOS EVERELDA ENTENSE 600
HOOS EVERELDA ENTENSE 984

S A V 707 RITO 9969
WHITESTONE LADY X087

HA POWER BOX 6708
HOOS 630 EVERELDA ENTENSE

BW	WW	YW	HP	MILK	MARB	REA	SM	SF	SG	SB	ACT BW
-2.4	+52	+102	+15.0	+32	+89	+6.8	+79	+78	+62	+139	55
											ADJ 205
											613
											DISP
											1

- Heifer bull
- Top 10% \$Maternal, 25% \$Wean, 15% \$Grid, and 35% \$Beef
- Smooth made bull that checks lots of boxes

021 Hoos Added Confidence 021

02/04/20 • REG: #19875878 • 021B

CONNEALY CONFIDENCE PLUS
E&B NEW ADDITION 608
E&B LADY DASH 4152

CONNEALY CONFIDENCE 0100
ELBANNA OF CONANGA 1209

SITZ DASH 10277
E&B LADY RIGHT ANSWER 296

JGM CORE VALUES 5G11
HOOS EVERELDA ENTENSE 847
HOOS EVERELDA ENTENSE 647

GDAR GAME DAY 449
JGM PROUD ERIKA 1H1

HOOS AMOS 910
HOOS EVERELDA ENTENSE 302

BW	WW	YW	HP	MILK	MARB	REA	SM	SF	SG	SB	ACT BW
-2.4	+51	+91	+13.1	+35	+81	+2.6	+69	+65	+52	+117	63
											ADJ 205
											645
											DISP
											1

- Heifer bull
- Top 25% \$Maternal, 20% \$Wean and top 35% \$Grid



Hoos Added Confidence 022

022 Hoos Added Confidence 022

02/05/20 • REG: #19875879 • 022B

CONNEALY CONFIDENCE PLUS
E&B NEW ADDITION 608
E&B LADY DASH 4152

CONNEALY CONFIDENCE 0100
ELBANNA OF CONANGA 1209

SITZ DASH 10277
E&B LADY RIGHT ANSWER 296

BALDRIDGE COMPASS C041
HOOS OLGA 837
HOOS OLGA 242

EF COMMANDO 1366
BALDRIDGE ISABEL Y69

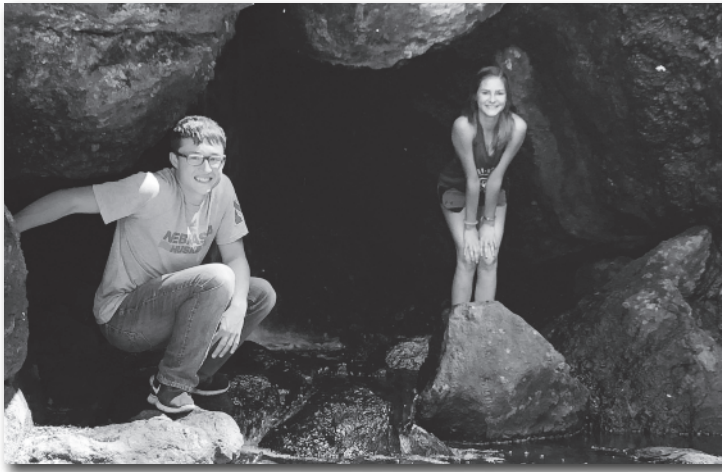
MARX TRUE GRIT 946
G BAR H OLGA 0113

BW	WW	YW	HP	MILK	MARB	REA	SM	SF	SG	SB	ACT BW
-.1	+49	+87	+11.3	+28	+63	+5.7	+60	+68	+47	+115	81
											ADJ 205
											614
											DISP
											1

- Heifer bull
- Nice little head and a smooth shouldered bull



Hoos Compass 020



023 Hoos Added Confidence 023

02/05/20 • REG: #19875880 • 023B

E&B NEW CONNEALY CONFIDENCE PLUS
ADDITION 608
E&B LADY DASH 4152

CONNEALY CONFIDENCE 0100
ELBANNA OF CONANGA 1209

SITZ DASH 10277
E&B LADY RIGHT ANSWER 296

TEHAMA REVERE
S QUEEN ESSA 248

HOOS BLACKCAP 819

S POWERPOINT WS 5503
HOOS BLACKCAP 630

HOOS BLACKCAT 361
HOOS 342 OF 6807 5138

BW	WW	YW	HP	MILK	MARB	REA	SM	SF	SG	SB	ACT BW
-1.	+55	+104	+12.5	+34	+88	+60	+67	+76	+59	+135	75

- Heifer bull
- Top 30% \$Maternal, 20% \$Wean, and 20% \$Grid
- Looks like a female maker

ADJ 205
682
DISP
2

024 Hoos Added Confidence 024

02/05/20 • REG: #19875881 • 024B

E&B NEW CONNEALY CONFIDENCE PLUS
ADDITION 608
E&B LADY DASH 4152

CONNEALY CONFIDENCE 0100
ELBANNA OF CONANGA 1209

SITZ DASH 10277
E&B LADY RIGHT ANSWER 296

EF COMMANDO 1366
BALDRIDGE ISABEL Y69

HOOS HAZEL 836

BALDRIDGE COMPASS C041
HOOS HAZEL 464

IDEAL 0748 OF 332 JILT
HOOS HAZEL 148

BW	WW	YW	HP	MILK	MARB	REA	SM	SF	SG	SB	ACT BW
+1.6	+60	+107	+11.3	+32	+91	+65	+67	+64	+62	+126	76

- Should work on heifers. Smooth made with a nice little head
- Top 30% \$Maternal, 15% \$Wean, and 15% \$Grid

ADJ 205
684
DISP
2

025 Hoos Added Confidence 025

02/06/20 • REG: #19875882 • 025B

E&B NEW CONNEALY CONFIDENCE PLUS
ADDITION 608
E&B LADY DASH 4152

CONNEALY CONFIDENCE 0100
ELBANNA OF CONANGA 1209

SITZ DASH 10277
E&B LADY RIGHT ANSWER 296

IDEAL ENCORE OF 9524 LADY
HOOS HAZEL 882

IDEAL ENCORE OF 9524 LADY
IDEAL 3020 OF SE 6X7 LADY
HOOS HAZEL 604
HOOS HAZEL 464

BW	WW	YW	HP	MILK	MARB	REA	SM	SF	SG	SB	ACT BW
+0	+63	+120	+13.7	+34	+97	+62	+67	+91	+64	+155	85

- Possible heifer bull with a little bigger birth weight than I would like on heifers, but he is made right
- Top 30% \$Maternal, 10% \$Wean, 25%, \$Feed, 15% \$ Grid, and 20% \$Beef

ADJ 205
700
DISP
2



026 Hoos Added Confidence 026

02/06/20 • REG: #19875883 • 026B

E&B NEW CONNEALY CONFIDENCE PLUS
ADDITION 608
E&B LADY DASH 4152

CONNEALY CONFIDENCE 0100
ELBANNA OF CONANGA 1209

SITZ DASH 10277
E&B LADY RIGHT ANSWER 296

LEACHMAN RIGHT TIME 338-5605
WMR BLACKCAP 52

HOOS IRENE 859

WMR TIMELESS 458
HOOS IRENE 450

DOUBLE R BAR RITO Y183
HOOS IRENE 212

BW	WW	YW	HP	MILK	MARB	REA	SM	SF	SG	SB	ACT BW
+2.4	+62	+109	+13.7	+31	+27	+76	+78	+79	+36	+115	81

- A good, maternal bred bull
- Ranks in the top 10% \$Maternal and 20% for \$Wean

ADJ 205
665
DISP
2



Hoos Added Confidence 025



Sire: Ideal Encore of 9524 Lady

C

Hoos Encore 857

02/03/2018 • REG: #19292862 • 857

IDEAL 9524 OF 5570 6809
 IDEAL ENCORE OF 9524 LADY
 IDEAL 3020 OF SE 6X7 LADY

IDEAL 5570 OF 0452 0534
 IDEAL 6809 OF 2P88 0459

SINCLAIR EXTRAVAGANT 6X7
 IDEAL 4428 OF 6442 4465

IDEAL 049 OF F506 6375
 IDEAL 8221 OF 5439 4517

IDEAL 332 OF 049 8221
 HOOS QUEEN ELLA 685
 IDEAL 608 OF 338 022

HYLINE RIGHT TIME 338
 IDEAL 022 OF 7451 701

BW	WW	YW	HP	MILK	MARB	REA	SM	SF	SG	SB
-0.8	+68	+135	+12.1	+39	+35	+48	+46	+103	+38	+141

Encore 857 was purchased by Quarter Circle Triangle at Ashby. We used him exclusively on heifers. The performance on his first calf crop here is exceptional with moderate birth weights. His pedigree is strong in Jorgensen genetics and we plan to use him to carry on this strong genetic base that has done so much for us here.

027 Hoos Ideal Cocktail 027

02/06/20 • REG: #19875884 • 027B

IDEAL 4545 OF 7451 6224
 IDEAL 8561 OF 4545 4704
 IDEAL 4704 OF 2300 2358

IDEAL 7451 OF 8103 4465
 IDEAL 6224 OF 306 4231

IDEAL 2300 OF T510 3401
 IDEAL 2358 OF 7573 759

S A V INTERNATIONAL 2020
 HOOS QUEEN ELLA 752
 IDEAL 507 OF 7451 806

S A V HARVESTOR 0338
 S A V EMBLYNETTE 5483

IDEAL 7451 OF 8103 4465
 IDEAL 806 OF 5201 503

BW	WW	YW	HP	MILK	MARB	REA	SM	SF	SG	SB	ACT BW
+4.7	+63	+103	+11.5	+26	+31	+66	+67	+91	+37	+129	104
											ADJ 205
											698
											DISP
											2

- Embryo
- Another really deep and really thick 8561 x752



Hoos Ideal Cocktail 027

029 Hoos Encore 029

02/07/20 • REG: #19875944 • 029B

IDEAL ENCORE OF 9524 LADY
 HOOS ENCORE 857
 HOOS QUEEN ELLA 685

IDEAL 9524 OF 5570 6809
 IDEAL 3020 OF SE 6X7 LADY

IDEAL 332 OF 049 8221
 IDEAL 608 OF 338 022

S R RESOURCE 415
 HOOS PRINCESS 809
 HOOS PRINCESS 405

S A V RESOURCE 1441
 S R BLACKCAP 702

MARX ALMIGHTY 811 3KG
 IDEAL 539 OF 03 013

BW	WW	YW	HP	MILK	MARB	REA	SM	SF	SG	SB	ACT BW
+3.2	+77	+151	+14.3	+29	+42	+79	+58	+123	+45	+168	86
											ADJ 205
											733
											DISP
											2

- Top 1% \$Feed, 10% \$Beef, and 15% \$Wean
- This growthy dude is out of a first calf heifer

032 Hoos Incentive 032

02/10/20 • REG: #19875886 • 032B

S A V INTERNATIONAL 2020
 HOOS INCENTIVE 708 TE43
 IDEAL 6313 OF 2Q23 4633

S A V HARVESTOR 0338
 S A V EMBLYNETTE 5483

SINCLAIR OPEN RANGE 2Q23
 IDEAL 4633 OF 452 281

MYTTY IN FOCUS
 SUMMITCREST ELBA 1M17

SUMMITCREST FOCUS 2U66
 HOOS MISS KATEE 418
 HOOS MISS KATEE 236

MARX TRUE GRIT 946
 HOOS MISS KATEE 054

BW	WW	YW	HP	MILK	MARB	REA	SM	SF	SG	SB	ACT BW
+4.8	+67	+109	+12.0	+28	+33	+59	+57	+85	+35	+120	100
											ADJ 205
											773
											DISP
											1

- His mom is one of our best weaning 5 calves thus far at 112
- He is gentle, super long spined and really thick
- Ranks in the top 30% \$Wean

030 Hoos Added Confidence 030

02/07/20 • REG: #19875885 • 030B

CONNEALY CONFIDENCE PLUS
 ADDITION 608
 E&B LADY DASH 4152

CONNEALY CONFIDENCE 0100
 ELBANNA OF CONANGA 1209

SITZ DASH 10277
 E&B LADY RIGHT ANSWER 296

IDEAL ENCORE OF 9524 LADY
 HOOS JUANADA 831
 HOOS JUANADA 688

IDEAL 9524 OF 5570 6809
 IDEAL 3020 OF SE 6X7 LADY

SINCLAIR EMULATION XXP
 COLE CREEK 858 JUANADA 675

BW	WW	YW	HP	MILK	MARB	REA	SM	SF	SG	SB	ACT BW
-3.7	+40	+90	+18.5	+37	+67	+21	+67	+77	+45	+122	66
											ADJ 205
											635
											DISP
											1

- Heifer bull
- Should make some hard-working daughters that are fertile and productive



Hoos Incentive 032

D Hoos Incentive 708 TE43

02/06/2017 • REG: #18906761 • 708

S A V HARVESTOR 0338
S A V INTERNATIONAL 2020
S A V EMBLYNETTE 5483

S A V HERITAGE 6295
S A V EMBLYNETTE 7749

S A V 8180 TRAVELER 004
S A V EMBLYNETTE 7260

SINCLAIR OPEN RANGE 2Q23
IDEAL 6313 OF 2Q23 4633
IDEAL 4633 OF 452 281

RITO 616 OF 4B20 6807
S C C MAJESTY K024 853
IDEAL 0452 OF 5439 467
IDEAL 281 OF 046 0142

BW	WW	YW	HP	MILK	MARB	REA	SM	SF	SG	SB
+6.8	+79	+137	+12.3	+22	+51	+68	+44	+121	+46	+167

One of the most powerful bulls that we have raised, who was purchased by Steve & Carol Balus. His progeny are loaded with dimension and performance. We have now weaned 30 calves out of Incentive and they have an average ratio of 105 against tough competition. We are anxious to calve his first daughters this spring. For you Angus Link'ers, how about top 2% SF and 10% SB.



Hoos Incentive 708 TE43

033 CST Earnan 033

02/11/20 • REG: #19875887 • 033B

CONNEALY EARNAN 076E
HOOS EARNAN 801
IDEAL 6313 OF 2Q23 4633

CONNEALY CONSENSUS
BRAZILA OF CONANGA 3991 839A

SINCLAIR OPEN RANGE 2Q23
IDEAL 4633 OF 452 281

MARX ALMIGHTY 811 3KG
HOOS 414 OF 811 015
OOS 015 OF 7773 519

S R NEW DESIGN 5072
MARX PT DBL G ETHELDA 0211

IDEAL 7773 OF 332 3403
KMD 9074 SUPER BANDO 519

BW	WW	YW	HP	MILK	MARB	REA	SM	SF	SG	SB	ACT BW
+5.1	+63	+100	+14.0	+22	+28	+28	+66	+65	+29	+94	93

- Chet's bull
- His sire is the highest marbling bull we have scanned and was purchased by Mike Vaughn

ADJ 205	93
DISP	644
	2

034 Hoos Thunder 034

02/11/20 • REG: #19875888 • 034B

BALDRIDGE KABOOM K243 KCF
CONNEALY THUNDER
PARKA OF CONANGA 241

JAUER 353 TRAVELER 589 27
PLEASANTA OF CONANGA 736

BON VIEW BANDO 598
PARTINA OF CONANGA 6237

HOOS ALMIGHTY 238
HOOS EISA EVERGREEN 645
HOOS EISA EVERGREEN 306

MARX ALMIGHTY 811 3KG
IDEAL 608 OF 338 022

CONNEALY FINAL PRODUCT
HOOS EISA EVERGREEN 138

BW	WW	YW	HP	MILK	MARB	REA	SM	SF	SG	SB	ACT BW
-1.6	+55	+97	+14.3	+26	+47	+37	+84	+82	+39	+121	76

- Heifer bull
- Top 4% \$Maternal and 25% \$Wean

ADJ 205	76
DISP	655
	2

036 Hoos Added Confidence 036

02/12/20 • REG: #19875890 • 036B

E&B NEW CONNEALY CONFIDENCE PLUS
ADDITION 608
E&B LADY DASH 4152

CONNEALY CONFIDENCE 0100
ELBANNA OF CONANGA 1209

SITZ DASH 10277
E&B LADY RIGHT ANSWER 296

HOOS AMOS 910
HOOS PROUD LASSIE 842
HOOS PROUD LASSIE 211

IDEAL 3542 OF 7451 7417
IDEAL 328 OF 03 820

KESSLERS FRONTMAN R001
GDH PROUD LASSIE 0107

BW	WW	YW	HP	MILK	MARB	REA	SM	SF	SG	SB	ACT BW
+2.1	+47	+89	+14.4	+33	+69	+62	+74	+72	+53	+125	82

- Top 15% \$Maternal and 30% \$Grid
- Out of a first calf heifer.
- Birth weight is good but genomics suggest not. You make the call.

ADJ 205	82
DISP	667
	2



Hoos Thunder 034

035 Hoos Uno 035

02/11/20 • REG: #19875889 • 035B

C C A UNO 049
BR UNO 803 OF 905
IDEAL 905 OF 3542 705

SITZ UPWARD 307R
MYTTY COUNTESS 906

IDEAL 3542 OF 7451 7417
IDEAL 705 OF ONWARD 214

CONNEALY STINGRAY 9618
HOOS FOREVER LADY 605
HOOS FOREVER LADY 463

CONNEALY FINAL SOLUTION
POWA OF CONANGA 9618

DOUBLE R BAR RITO Y188
HOOS FOREVER LADY 724

BW	WW	YW	HP	MILK	MARB	REA	SM	SF	SG	SB	ACT BW
-.8	+57	+100	+14.4	+29	+39	+52	+70	+62	+41	+103	61

- Heifer Bull
- Top 25% \$Maternal and 20% \$Wean

ADJ 205	61
DISP	649
	2



Hoos Uno 035



Connealy Thunder

E Connealy Thunder

01/28/2005 • REG: #15148659 • 587

JAUER 353 TRAVELER 589 27 JAUER 7111 TRAVELER 353 719
 BALDRIDGE KABOOM K243 KCF JAUER 6807 TRAVELER 27 085
 PLEASANTA OF CONANGA 736 G T MAXIMUM
 PLEASANT PILL OF CONANGA

BON VIEW BANDO 598 TEHAMA BANDO 155
 PARKA OF CONANGA 241 BON VIEW DORA 56
 PARTINA OF CONANGA 6237 SCHOENES FIX IT 826
 PARTY DATE OF CONANGA

BW	WW	YW	HP	MILK	MARB	REA	SM	SF	SG	SB
-1.0	+42	+83	+11.2	+25	+43	+41	+73	+78	+41	+119

A proven bull with nearly 12,000 progeny reported to the angus association. We used him because he is a proven bull that leaves very few holes. As his daughters get some age on them we have heard nothing but good things. Thunder will make easy fleshing, high producing daughters.

037 Hoos Thunder 037

02/12/20 • REG: #19875891 • 037B

BALDRIDGE KABOOM K243 KCF JAUER 353 TRAVELER 589 27
 CONNEALY THUNDER PLEASANTA OF CONANGA 736
 PARKA OF CONANGA 241 BON VIEW BANDO 598
 PARTINA OF CONANGA 6237
 MARX 0211 DBL G NEW B 713 S R NEW DESIGN 5072
 HOOS ERICA 152 MARX PT DBL G ETHELDA 0211
 HOOS ERICA 716 WOODHILL FORESIGHT
 H F ERICA 728

BW	WW	YW	HP	MILK	MARB	REA	SM	SF	SG	SB	ACT BW
+3.4	+52	+89	+13.3	+20	+21	+4.6	+70	+65	+31	+96	97

- Thunder is proven female maker
- He ranks in the top 25% \$Maternal

ADJ 205
663
DISP
2

041 Hoos Core Values 041

02/14/20 • REG: #19875893 • 041B

GDAR GAME DAY 449 BOYD NEW DAY 8005
 JGM CORE VALUES 5G11 G D A R MISS WIX 474
 JGM PROUD ERIKA 1H1 H A IMAGE MAKER 0415
 JGM PROUD ERIKA 9M11
 DOUBLE R BAR RITO Y188 S A V 707 RITO 9969
 HOOS DIXIE ERICA 654 WHITSTONE LADY X087
 HOOS DIXIE ERICA 209 KESSLERS FRONTMAN R001
 HOOS DIXIE ERICA 013

BW	WW	YW	HP	MILK	MARB	REA	SM	SF	SG	SB	ACT BW
+1.7	+77	+124	+14.4	+29	+41	+72	+91	+94	+42	+136	78

- Really nice bull that should excel for making females and feeder cattle!
- Top 1% \$Maternal, Top 1% \$Wean and top 20% \$Feed

ADJ 205
726
DISP
2

038 Hoos Incentive 038

02/13/20 • REG: #19875892 • 038B

S A V INTERNATIONAL 2020 S A V HARVESTOR 0338
 HOOS INCENTIVE 708 TE43 S A V EMBLYNETTE 5483
 IDEAL 6313 OF 2Q23 4633 SINCLAIR OPEN RANGE 2Q23
 IDEAL 4633 OF 452 281
 KESSLERS FRONTMAN R001 CONNEALY FRONT PAGE 0228
 HOOS HAZEL 112 KESSLERS BELL 0024
 HOOS HAZEL 965 S A V FINAL ANSWER 0035
 ALC HAZEL P92P

BW	WW	YW	HP	MILK	MARB	REA	SM	SF	SG	SB	ACT BW
+2.5	+69	+123	+15.0	+26	-.11	+7.0	+57	+102	+18	+121	85

- Long and thick
- His mom has raised 8 calves with a 109 weaning ratio
- Top 10% \$Feed and 20% \$Wean

ADJ 205
735
DISP
2

042 Hoos Earnan 042

02/14/20 • REG: #19875894 • 042B

CONNEALY EARNAN 076E CONNEALY CONSENSUS
 HOOS EARNAN 801 BRAZILA OF CONANGA 3991 839A
 IDEAL 6313 OF 2Q23 4633 SINCLAIR OPEN RANGE 2Q23
 IDEAL 4633 OF 452 281
 HOOS REGISTRY 511 S A V REGISTRY 2831
 HOOS QUEEN ELLA 758 IDEAL 608 OF 338 022
 HOOS QUEEN ELLA 508 CONNEALY FINAL PRODUCT
 HOOS 292 OF GURU 806

BW	WW	YW	HP	MILK	MARB	REA	SM	SF	SG	SB	ACT BW
+2.6	+57	+100	+10.6	+24	+29	+4.2	+64	+87	+34	+120	90

- Top 35% \$Maternal and 30% \$Feed
- His Earnan sire was a feature in our 2019 sale

ADJ 205
665
DISP
2

040 Hoos Compass 040

02/14/20 • REG: #19880397 • 040B

EF COMMANDO 1366 EF COMPLEMENT 8088
 BALDRIDGE COMPASS C041 RIVERBEND YOUNG LUCY W1470
 BALDRIDGE ISABEL Y69 STYLES UPGRADE J59
 BALDRIDGE ISABEL T935
 HOOS AMOS 910 IDEAL 3542 OF 7451 7417
 HOOS EVERELDA ENTENSE 302 IDEAL 328 OF 03 820
 HOOS EVERELDA ENTENSE 302 SUMMITCREST FOCUS 2U66
 HOOS EVERELDA ENTENSE 159

BW	WW	YW	HP	MILK	MARB	REA	SM	SF	SG	SB	ACT BW
+2.2	+73	+123	+12.5	+26	+60	+8.2	+66	+88	+52	+139	80

- A real complete bull with tremendous length and depth
- Top 30% \$maternal, 10% \$Wean, 25% \$Feed, 35% \$Grid, 30% \$Beef

ADJ 205
705
DISP
1

043 Hoos Compass 043

02/15/20 • REG: #19875895 • 043B

EF COMMANDO 1366 EF COMPLEMENT 8088
 BALDRIDGE COMPASS C041 RIVERBEND YOUNG LUCY W1470
 BALDRIDGE ISABEL Y69 STYLES UPGRADE J59
 BALDRIDGE ISABEL T935
 IDEAL 0748 OF 332 JILT IDEAL 332 OF 049 8221
 HOOS EISA EVERGREEN 264 IDEAL 357 OF 745 0253
 HOOS 628 EISA EVERGREEN K C F BENNETT COALITION SCC
 ER EISA EVERGREEN K215

BW	WW	YW	HP	MILK	MARB	REA	SM	SF	SG	SB	ACT BW
+1.7	+66	+116	+12.8	+33	+81	+5.8	+59	+85	+58	+143	84

- Lots of length and Depth
- His mom has weaned 7 @ 101
- Ranks top 10% \$Wean, 35% \$Feed, 20% \$Grid, and 30% \$Beef

ADJ 205
710
DISP
2



Baldrige Compass C041

F Baldrige Compass C041

01/14/2015 • REG: #18229488 • C041

EF COMPLEMENT 8088
 EF COMMANDO 1366
 RIVERBEND YOUNG LUCY W1470 B/R AMBUSH 28
 RIVERBEND YOUNG LUCY T1080

BASIN FRANCHISE P142
 EF EVERELDA ENTENSE 6117

STYLES UPGRADE J59
 BALDRIDGE ISABEL Y69
 BALDRIDGE ISABEL T935

SITZ UPWARD 307R
 PLAINVIEW LASSIE 71B

BALDRIDGE KABOOM K243 KCF
 BALDRIDGE ISABEL P4527

BW	WW	YW	HP	MILK	MARB	REA	SM	SF	SG	SB
-.2	+61	+111	+11.9	+37	+1.02	+68	+70	+91	+67	+158

Compass has proved to enhance many areas of economic importance. He ranks in the top 10% of the breed for marbling, and in the top 15% for SMaternal and SBeef making him very unique. We used him because of his excellent feet and leg structure along with his super attractive phenotype. He is out of the famous Baldrige Isabel Y69 cow. Compass will build cows and move you up the Angus Link Merit.

044 Hoos Incentive 044

02/15/20 • REG: #19875896 • 044B

S A V INTERNATIONAL 2020
 HOOS INCENTIVE 708 TE43
 IDEAL 6313 OF 2Q23 4633

S A V HARVESTOR 0338
 S A V EMBLYNETTE 5483
 SINCLAIR OPEN RANGE 2Q23
 IDEAL 4633 OF 452 281

IDEAL 5439 OF 1418 2455
 HOOS 319 OF 5439 612
 IDEAL 612 OF 7451 806

IDEAL 1418 OF 8103 4286
 IDEAL 2455 OF 9199 4293

IDEAL 7451 OF 8103 4465
 IDEAL 806 OF 5201 503

BW	WW	YW	HP	MILK	MARB	REA	SM	SF	SG	SB	ACT BW
+5.2	+73	+127	+13.4	+27	+4.9	+6.4	+48	+99	+46	+146	112

- Really heavy muscled and powerful bull
- Top 25% \$Wean, Top 15% \$Feed, and 30% \$Beef

ADJ 205
728
DISP
1

045 Hoos Thunder 045

02/15/20 • REG: #19875897 • 045B

BALDRIDGE KABOOM K243 KCF
 CONNEALY THUNDER
 PARKA OF CONANGA 241

JAUER 353 TRAVELER 589 27
 PLEASANTA OF CONANGA 736

BON VIEW BANDO 598
 PARTINA OF CONANGA 6237

MARX TRUE GRIT 946
 HOOS EVERELDA ENTENSE 339
 HOOS EVERELDA ENTENSE 156

MARX 9723 SRT 601
 MARX PT QUEEN NANCY 03131

MARX 0211 DBL G NEW B 713
 HOOS EVERELDA ENTENSE 800

BW	WW	YW	HP	MILK	MARB	REA	SM	SF	SG	SB	ACT BW
+7	+49	+85	+13.4	+24	+2.4	+5.1	+77	+70	+35	+105	86

- His mom is one of our favorites and Thunder is a proven female maker
- This bull has a great presence with lots of thickness
- Ranks in the top 10% \$Maternal

ADJ 205
711
DISP
2

047 Hoos Compass 047

02/16/20 • REG: #19875898 • 047B

EF COMMANDO 1366
 BALDRIDGE COMPASS C041
 BALDRIDGE ISABEL Y69

EF COMPLEMENT 8088
 RIVERBEND YOUNG LUCY W1470

STYLES UPGRADE J59
 BALDRIDGE ISABEL T935

IDEAL 0748 OF 332 JILT
 HOOS IRENE 533
 HOOS IRENE 212

IDEAL 332 OF 049 8221
 IDEAL 357 OF 745 0253

SITZ THUNDERBOLT 0189
 HOOS IRENE 960

BW	WW	YW	HP	MILK	MARB	REA	SM	SF	SG	SB	ACT BW
+2.7	+77	+132	+15.7	+29	+6.7	+5.5	+70	+84	+51	+135	92

- Dam has weaned 4 calves at 110
- This guy is loaded with length and depth
- Top 25% \$Maternal, 10% \$Wean, 35% \$Feed, 35% \$Grid, 35% \$Beef

ADJ 205
779
DISP
2



The Chet & Samantha Tausan Family

049 Hoos Energizer 049

02/16/20 • REG: #19875899 • 049B

IDEAL 4545 OF 7451 6224
 IDEAL 8561 OF 4545 4704
 IDEAL 4704 OF 2300 2358

IDEAL 7451 OF 8103 4465
 IDEAL 6224 OF 306 4231

IDEAL 2300 OF T510 3401
 IDEAL 2358 OF 7573 759

MARX ALMIGHTY 811 3KG
 HOOS EISA EVERGREEN 640
 HOOS EISA EVERGREEN 317

S R NEW DESIGN 5072
 MARX PT DBL G ETHELDA 0211

IDEAL 5439 OF 1418 2455
 HOOS 628 EISA EVERGREEN

BW	WW	YW	HP	MILK	MARB	REA	SM	SF	SG	SB	ACT BW
+6.2	+64	+110	+10.9	+41	+0	+1.1	+48	+82	+16	+98	103

- Super sound and deep sided 8561 son
- Ranks in the top 25% \$Maternal

ADJ 205
682
DISP
2



Hoos Compass 047

G JGM Core Values 5G11

04/05/2015 • REG: #18650469 • 5G11



JGM Core Values 5G11

BOYD NEW DAY 8005
GDAR GAME DAY 449
G D A R MISS WIX 474

A A R NEW TREND
S V F FOREVER LADY 57D

TEHAMA BAND 207
G D A R MISS WIX 749

H A IMAGE MAKER 0415
JGM PROUD ERIKA 1H1
JGM PROUD ERIKA 9M11

HERO 6267 OF R R 2418
H A RITO BLACKCAP 9038

O C C EMBLAZON 854E
J G M LADY ERIKA L S 016

BW	WW	YW	HP	MILK	MARB	REA	SM	SF	SG	SB
-.1	+61	+101	+15.3	+32	+.51	+.48	+89	+85	+43	+128

I think the term "good cows" is used too generically. Here is what we are seeing from our Core Values daughters. We have now had 24 that have all bred as first calf heifers. 14 Daughters have now raised 1 calf and had an average nursing ratio of 104 with only 1 of them coming up open. They are very productive, very fertile, and exhibit excellent maternal instinct. We will continue to use Core Values to make "good cows".

050 Hoos Core Values 050

02/16/20 • REG: #19875900 • 050B

GDAR GAME DAY 449
JGM CORE VALUES 5G11
JGM PROUD ERIKA 1H1

BOYD NEW DAY 8005
G D A R MISS WIX 474

H A IMAGE MAKER 0415
JGM PROUD ERIKA 9M11

S A V 707 RITO 9969
WHITESTONE LADY X087

DOUBLE R BAR RITO Y188
HOOS EISA EVERGREEN 651
HOOS EISA EVERGREEN 264

IDEAL 0748 OF 332 JILT
HOOS 628 EISA EVERGREEN

BW	WW	YW	HP	MILK	MARB	REA	SM	SF	SG	SB	ACT BW
+2.9	+67	+115	+17.7	+29	+.60	+.76	+74	+104	+49	+153	85

- A bull that always catches your eye
- Cool made and thick.
- Top 15% \$Maternal, 20% \$Wean, 10% \$Feed, and 20% \$Beef

ADJ 205
667
DISP
2

051 Hoos Core Values 051

02/17/20 • REG: #19875901 • 51B

GDAR GAME DAY 449
JGM CORE VALUES 5G11
JGM PROUD ERIKA 1H1

BOYD NEW DAY 8005
G D A R MISS WIX 474

H A IMAGE MAKER 0415
JGM PROUD ERIKA 9M11

SITZ GREATPLAINS 9520
WOODHILL LUCY 666-54K

WOODHILL STATESMAN 54K-90N
HOOS DORA 937
HOOS DORA 712

RR 2931 AMBUSH 2346
IAR 3407 T T TOUCHSTONE 5510

BW	WW	YW	HP	MILK	MARB	REA	SM	SF	SG	SB	ACT BW
+.8	+56	+93	+13.3	+29	+.37	+.17	+75	+60	+30	+90	85

- His mother has weaned 9 calves at 106
- Top 15% \$Maternal & top 20% \$Wean

ADJ 205
720
DISP
2



Jessamyn

Hoos Core Values 050

052

Hoos Thunder 052

02/17/20 • REG: #19875902 • 052B

BALDRIDGE KABOOM K243 KCF
CONNEALY THUNDER
PARKA OF CONANGA 241

JAUER 353 TRAVELER 589 27
PLEASANTA OF CONANGA 736
BON VIEW BANDO 598
PARTINA OF CONANGA 6237

MARX ALMIGHTY 811 3KG
HOOS 153 OF ALMIGHTY 319
IDEAL 319 OF 03 121

S R NEW DESIGN 5072
MARX PT DBL G ETHELDA 0211
IDEAL 03 OF D806 806
IDEAL 121 OF 901 506

BW	WW	YW	HP	MILK	MARB	REA	SM	SF	SG	SB	ACT BW
+4.2	+62	+117	+8.8	+18	+.35	+4.4	+44	+98	+37	+135	99
											ADJ 205
											694
											DISP
											2

- A heavy boned and thick booger
- Ranks in the top 15% \$Feed

053

Hoos Compass 053

02/17/20 • REG: #19875903 • 053B

EF COMMANDO 1366
BALDRIDGE COMPASS C041
BALDRIDGE ISABEL Y69

EF COMPLEMENT 8088
RIVERBEND YOUNG LUCY W1470
STYLES UPGRADE J59
BALDRIDGE ISABEL T935

IDEAL 7407 OF 1418 4465
HOOS QUEEN ELLA 786
IDEAL 507 OF 7451 806

IDEAL 1418 OF 8103 4286
IDEAL 4465 OF 6807 4286

IDEAL 7451 OF 8103 4465
IDEAL 806 OF 5201 503

BW	WW	YW	HP	MILK	MARB	REA	SM	SF	SG	SB	ACT BW
+0	+56	+94	+10.4	+32	+.49	+6.8	+69	+71	+50	+121	64
											ADJ 205
											587
											DISP
											2

- Heifer Bull
- Top 25% Wean, 20% \$Maternal

054

Hoos Compass 054

02/18/20 • REG: #19875904 • 054B

EF COMMANDO 1366
BALDRIDGE COMPASS C041
BALDRIDGE ISABEL Y69

EF COMPLEMENT 8088
RIVERBEND YOUNG LUCY W1470
STYLES UPGRADE J59
BALDRIDGE ISABEL T935

MARX ALMIGHTY 811 3KG
HOOS BLACKBIRD 335
HOOS BLACKBIRD 005

S R NEW DESIGN 5072
MARX PT DBL G ETHELDA 0211

S A V FINAL ANSWER 0035
HOOS DORA 712

BW	WW	YW	HP	MILK	MARB	REA	SM	SF	SG	SB	ACT BW
+4.1	+84	+150	+12.9	+24	+.72	+8.2	+52	+107	+58	+164	97
											ADJ 205
											680
											DISP
											2

- Angus Link superstar
- Top 15% \$Wean, Top 4% \$Feed, 25% \$Grid, and 10% \$Beef

056

Hoos Incentive 056

02/19/20 • REG: #19875905 • 056B

S A V INTERNATIONAL 2020
HOOS INCENTIVE 708 TE43
IDEAL 6313 OF 2Q23 4633

S A V HARVESTOR 0338
S A V EMBLYNETTE 5483

SINCLAIR OPEN RANGE 2Q23
IDEAL 4633 OF 452 281

S A V RESOURCE 1441
HOOS DORA 515
HOOS DORA 937

RITO 707 OF IDEAL 3407 7075
S A V BLACKCAP MAY 4136

WOODHILL STATESMAN 54K-90N
HOOS DORA 712

BW	WW	YW	HP	MILK	MARB	REA	SM	SF	SG	SB	ACT BW
+6.6	+72	+122	+12.2	+22	+.21	+4.6	+54	+89	+28	+117	111
											ADJ 205
											715
											DISP
											1

- An absolute hog out of a massive Resource cow
- Top 30% \$Feed

057

Hoos Incentive 057

02/19/20 • REG: #19875906 • 057B

S A V INTERNATIONAL 2020
HOOS INCENTIVE 708 TE43
IDEAL 6313 OF 2Q23 4633

S A V HARVESTOR 0338
S A V EMBLYNETTE 5483

SINCLAIR OPEN RANGE 2Q23
IDEAL 4633 OF 452 281

LAR IMAGE 832T
HOOS 070 OF 832T 019
IDEAL 019 OF 5439 514

H A IMAGE MAKER 0415
EBON EILEENMERE 659R LAR

IDEAL 5439 OF 1418 2455
IDEAL 514 OF 6807 1226

BW	WW	YW	HP	MILK	MARB	REA	SM	SF	SG	SB	ACT BW
+4.8	+61	+107	+10.9	+35	+.25	+4.9	+39	+79	+33	+122	102
											ADJ 205
											768
											DISP
											1

- Dam has weaned 9 at 107
- Stretchy and bigger outlined bull

058

Hoos Compass 058

02/19/20 • REG: #19875907 • 058B

EF COMMANDO 1366
BALDRIDGE COMPASS C041
BALDRIDGE ISABEL Y69

EF COMPLEMENT 8088
RIVERBEND YOUNG LUCY W1470
STYLES UPGRADE J59
BALDRIDGE ISABEL T935

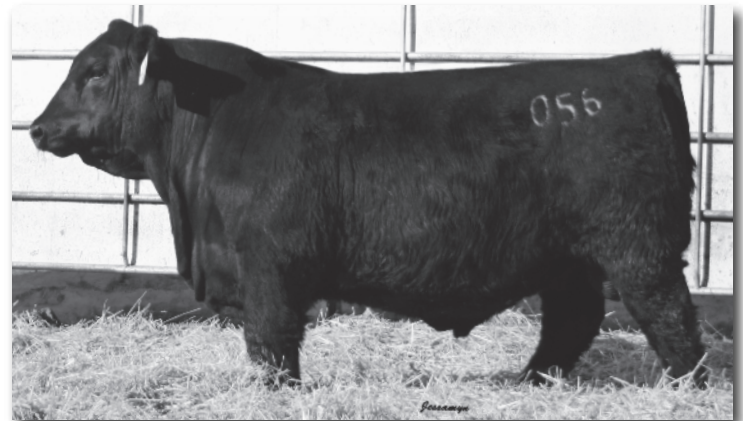
DOUBLE R BAR RITO Y188
HOOS QUEEN 451
VERMILION QUEEN 1865

S A V 707 RITO 9969
WHITESTONE LADY X087

LEACHMAN RIGHT TIME
VERMILION QUEEN 7913

BW	WW	YW	HP	MILK	MARB	REA	SM	SF	SG	SB	ACT BW
+3.7	+62	+104	+13.9	+25	+.56	+7.0	+62	+56	+47	+133	87
											ADJ 205
											685
											DISP
											2

- Compass ranking in the top 35% for \$Feed
- Dam has weaned 5 @ 103



Hoos Incentive 056



Hoos Incentive 056



Double R Bar Hesston D180

H Double R Bar Hesston D180

03/10/2016 • REG: #18420102 • D180

S A V HARVESTOR 0338
S A V HESSTON 2217
S A V EMBLYNETTE 3301

S A V HERITAGE 6295
S A V EMBLYNETTE 7749

S A F 598 BANDO 5175
S A V EMBLYNETTE 7319

SOO LINE MOTIVE 9016
THUNDERFOOT EVERELDA Z288
C&H EVER ENTENSE 3210

HF KODIAK 5R
TLA BEAUTY 5R

BON VIEW NEW DESIGN 1407
SHADYBROOK EVER ENTENSE 491G

BW	WW	YW	HP	MILK	MARB	REA	SM	SF	SG	SB
+2	+53	+92	+10.5	+28	+73	+55	+60	+77	+53	+130

Unfortunately we had to put D180 down with a broken leg before we ever attempted to collect semen on him. These will be the last Hesston sons that we will have, but we do plan to collect a son or two. He constantly stamps his progeny with show ring quality. His marbling ranks in the top 25% of the breed.

059

Hoos Marriott 059

02/20/20 • REG: #19875908 • 059B

MARRIOTT OF WR BAR 8055
TRW MARRIOTT 703
TR W ERICA 711 ALL 187 013

SKARSHIP SARATOGA
F W R 6298 LADY ELBAN 543

T R W ALLIANCE 187 711
T R W ERICA ALLIANCE 6164

JGM CORE VALUES 5G11
HOOS QUEEN ELLA 846
HOOS QUEEN ELLA 653

GDAR GAME DAY 449
JGM PROUD ERIKA 1H1

IDEAL 332 OF 049 8221
IDEAL 608 OF 338 022

BW	WW	YW	HP	MILK	MARB	REA	SM	SF	SG	SB	ACT BW
+8	+55	+88	+10.1	+30	+32	+17	+68	+53	+31	+84	75

- Heifer bull
- Top 20% \$Wean and 30% \$Maternal

ADJ 205
723
DISP
2

061

Hoos Marriott 061

02/21/20 • REG: #19875945 • 061B

MARRIOTT OF WR BAR 8055
TRW MARRIOTT 703
TR W ERICA 711 ALL 187 013

SKARSHIP SARATOGA
F W R 6298 LADY ELBAN 543

T R W ALLIANCE 187 711
T R W ERICA ALLIANCE 6164

JGM CORE VALUES 5G11
HOOS BLACKBIRD 854
HOOS BLACKBIRD 506

GDAR GAME DAY 449
JGM PROUD ERIKA 1H1

MARX ALMIGHTY 811 3KG
HOOS BLACKBIRD 201

BW	WW	YW	HP	MILK	MARB	REA	SM	SF	SG	SB	ACT BW
+1.4	+63	+98	+9.2	+39	+27	+30	+77	+72	+28	+100	86

- Unique pedigree
- Moderate birth, growthy bull out of a 1st calf heifer
- Top 10% \$Maternal and top 2% \$Wean

ADJ 205
735
DISP
2

063

Hoos Uno 063

02/24/20 • REG: #19875910 • 063B

C C A UNO 049
BR UNO 803 OF 905
IDEAL 905 OF 3542 705

SITZ UPWARD 307R
MYTTY COUNTESS 906

IDEAL 3542 OF 7451 7417
IDEAL 705 OF ONWARD 214

MOHNEN SUBSTANTIAL 272
HOOS MISS 404
HOOS MISS 009 FA 337

BENFIELD SUBSTANCE 8506
MOHNEN GLYN MAWR ELBA 1758

S A V FINAL ANSWER 0035
KMD MISS NEUTRON 377 337

BW	WW	YW	HP	MILK	MARB	REA	SM	SF	SG	SB	ACT BW
+1.3	+77	+136	+9.8	+26	+46	+61	+56	+94	+41	+135	86

- Look this guy up. I like him
- Top 5% \$Wean and 25% \$Feed

ADJ 205
684
DISP
1



Hoos Uno 063

062

Hoos Energizer 062

02/22/20 • REG: #19875909 • 062B

IDEAL 4545 OF 7451 6224
IDEAL 8561 OF 4545 4704
IDEAL 4704 OF 2300 2358

IDEAL 7451 OF 8103 4465
IDEAL 6224 OF 306 4231

IDEAL 2300 OF T510 3401
IDEAL 2358 OF 7573 759

MC CONNELL IN TIME 201
HOOS DORINDA 400
SINCLAIR DORINDA 356 7298

SINCLAIR NICK OF TIME 6P90
SITZ PRIDE 7T

N BAR SHADOW X4124
IDEAL 7298 OF 809 3134

BW	WW	YW	HP	MILK	MARB	REA	SM	SF	SG	SB	ACT BW
+4.1	+61	+100	+10.1	+31	+05	+38	+46	+80	+20	+100	93

- His mother is a real deep and attractive cow that has weaned 5 @104
- An attractive and clean made 8561 ranking in the top 35% \$Wean

ADJ 205
724
DISP
1

065

Hoos Hesston 065

02/25/20 • REG: #19875911 • 065B

S A V HESSTON 2217
DOUBLE R BAR HESSTON D180
THUNDERFOOT EVERELDA Z288

S A V HARVESTOR 0338
S A V EMBLYNETTE 3301

SOO LINE MOTIVE 9016
C&H EVER ENTENSE 3210

IDEAL 0748 OF 332 JILT
HOOS QUEEN ELLA 502
HOOS 290 OF GURU 806

IDEAL 332 OF 049 8221
IDEAL 357 OF 745 0253

BALDRIDGE GURU 427
IDEAL 806 OF 5201 503

BW	WW	YW	HP	MILK	MARB	REA	SM	SF	SG	SB	ACT BW
+9	+37	+64	+11.2	+29	+36	+48	+63	+60	+35	+95	79

- Show ring quality

ADJ 205
628
DISP
2



TRW Marriott 703

TRW Marriott 703

03/08/2017 • REG: #18976941 • 703

SKARSHIP SARATOGA
MARRIOTT OF WR BAR 8055
F W R 6298 LADY ELBAN 543

PINE DRIVE BIG SKY
W A R ELBA 43J

BIG ELBAN OF GRAHAM 6298
F W R MISS PROMOTER 610

T R W ALLIANCE 187 711
T R W ERICA 711 ALL 187 013
T R W ERICA ALLIANCE 6164

KMK ALLIANCE 6595 187
W R BAR EVERELDA 921

MARTIN ALLIANCE N106
T R W ERICA BLOCKBUSTER 3172

BW	WW	YW	HP	MILK	MARB	REA	SM	SF	SG	SB
-2.0	+42	+63	+9.8	+23	-.03	+.14	+51	+50	+14	+64

We found Marriott while touring the Tom Wiese herd. I was impressed with the fact that Tom runs his small registered cow herd right along side his mainly commercial cow herd in a true Sandhills ranch environment. Marriott's mom and the daughters of Marriott that I seen impressed me. We have not been disappointed. The epd's maybe don't keep up, but don't let that fool ya. I believe the Marriotts will compete with with the best. Expect sure fire calving ease and added frame. We think there are some real good bulls in this sire group and we are very excited to get daughters in production.

066

Hoos Marriott 066

02/06/20 • REG: #19875912 • 066B

MARRIOTT OF WR BAR 8055
TRW MARRIOTT 703
T R W ERICA 711 ALL 187 013

SKARSHIP SARATOGA
F W R 6298 LADY ELBAN 543

T R W ALLIANCE 187 711
T R W ERICA ALLIANCE 6164

WMR TIMELESS 458
HOOS ROSE 860
HOOS ROSE 312

LEACHMAN RIGHT TIME 338-5605
WMR BLACKCAP 521

IDEAL 1281 OF 6469 JILT
HOOS ROSE 010

BW	WW	YW	HP	MILK	MARB	REA	SM	SF	SG	SB	ACT BW
+1.9	+54	+87	+9.8	+16	-.02	+.31	+43	+63	+14	+77	78

- Heifer bull
- Angular bull with a good hip

ADJ 205	78
DISP	2

067

Hoos Marriott 067

02/27/20 • REG: #19875913 • 067B

MARRIOTT OF WR BAR 8055
TRW MARRIOTT 703
T R W ERICA 711 ALL 187 013

SKARSHIP SARATOGA
F W R 6298 LADY ELBAN 543

T R W ALLIANCE 187 711
T R W ERICA ALLIANCE 6164

HOOS BLACKCAT 361
HOOS IRENE 862
HOOS IRENE 533

IDEAL 0748 OF 332 JILT
HOOS IDA 021

IDEAL 0748 OF 332 JILT
HOOS IRENE 212

BW	WW	YW	HP	MILK	MARB	REA	SM	SF	SG	SB	ACT BW
-.1	+49	+78	+14.6	+22	+.07	-.04	+46	+59	+13	+72	66

- Heifer bull
- Expect these Marriott bulls to add some frame
- Top 25% \$Maternal

ADJ 205	66
DISP	1

069

Hoos Hesston 069

02/28/20 • REG: #19875914 • 069B

S A V HESSTON 2217
DOUBLE R BAR HESSTON D180
THUNDERFOOT EVERELDA Z288

S A V HARVESTOR 0338
S A V EMBLYNETTE 3301

SOO LINE MOTIVE 9016
C&H EVER ENTENSE 3210

SS NET WORTH 29
HOOS ETHELDA 4021
HOOS ETHELDA 402

S A V NET WORTH 4200
SITZ BARBARAMERE 1110

FORCE OF P R 53-7
MARX PT DBL G ETHELDA 0211

BW	WW	YW	HP	MILK	MARB	REA	SM	SF	SG	SB	ACT BW
+4.6	+45	+68	+14.2	+27	+.52	+.39	+70	+45	+40	+85	93

- Good bull with a great design
- Lots of lower quarter

ADJ 205	93
DISP	2

070

Hoos Marriott 070

02/29/20 • REG: #19875915 • 070B

MARRIOTT OF WR BAR 8055
TRW MARRIOTT 703
T R W ERICA 711 ALL 187 013

SKARSHIP SARATOGA
F W R 6298 LADY ELBAN 543

T R W ALLIANCE 187 711
T R W ERICA ALLIANCE 6164

JGM CORE VALUES 5G11
HOOS BETSEY 849
HOOS BETSEY 635

GDAR GAME DAY 449
JGM PROUD ERIKA 1H1

DOUBLE R BAR RITO Y188
HOOS 324 OF RES 015

BW	WW	YW	HP	MILK	MARB	REA	SM	SF	SG	SB	ACT BW
+4	+57	+89	+15.3	+30	+.28	+.25	+80	+73	+129	+102	73

- Heifer bull
- Top 5% \$Maternal, Top 20% \$Wean

ADJ 205	73
DISP	2



Hoos Marriott 070

073

Hoos Energizer 073

03/01/20 • REG: #1987591 • 073B

IDEAL 4545 OF 7451 6224
IDEAL 8561 OF 4545 4704
IDEAL 4704 OF 2300 2358

IDEAL 7451 OF 8103 4465
IDEAL 6224 OF 306 4231

IDEAL 2300 OF T510 3401
IDEAL 2358 OF 7573 759

IDEAL 5439 OF 1418 2455
HOOS EISA EVERGREEN 317
HOOS 628 EISA EVERGREEN

IDEAL 1418 OF 8103 4286
IDEAL 2455 OF 9199 4293

K C F BENNETT COALITION SCC
ER EISA EVERGREEN K215

BW	WW	YW	HP	MILK	MARB	REA	SM	SF	SG	SB	ACT BW
+3.6	+52	+84	+10.1	+33	-.10	+0	+56	+53	+10	+63	98

- Soggy bull with a lot to him
- Dam has weaned 5 @105

ADJ 205	98
DISP	2



Sire: C C A Uno 049

J BR Uno 803 of 905

12/29/2017 • REG: #19192346 • 803

SITZ UPWARD 307R
C C A UNO 049
MYTTY COUNTESS 906

CONNEALY ONWARD
SITZ HENRIETTA PRIDE 81 M
SITZ ALLIANCE 6595
BALDRIDGE COUNTESS 357

IDEAL 3542 OF 7451 7417
IDEAL 905 OF 3542 705
IDEAL 705 OF ONWARD 214

IDEAL 7451 OF 8103 4465
IDEAL 7417 OF 1418 4465
CONNEALY ONWARD
IDEAL 214 OF 7451 806

BW	WW	YW	HP	MILK	MARB	REA	SM	SF	SG	SB
+1.9	+68	+128	+10.9	+38	+29	+63	+50	+94	+36	+130

We purchased Uno from Phil AcMoody at Butternut Ridge thru the Midland Bull test. His mother is a special individual earning a NR of 113 and YR of 107. This heavily influenced Jorgensen bred female is a feed efficiency queen with her progeny excelling in the feed efficiency test of the Midland Bull Test leading to the world champion pen in 2019. While at Midland, Uno converted at 5.59 and earned a 114 feed efficiency rate. His feet and leg structure is excellent. We are very excited to see what Uno can do here.

074

Hoos Uno 074

03/02/20 • REG: #19875917 • 074B

C C A UNO 049
BR UNO 803 OF 905
IDEAL 905 OF 3542 705

SITZ UPWARD 307R
MYTTY COUNTESS 906
IDEAL 3542 OF 7451 7417
IDEAL 705 OF ONWARD 214

DOUBLE R BAR RITO Y188
HOOS BLACKBIRD 466
HOOS 178 OF ALMIGHTY 527

S A V 707 RITO 9969
WHITESTONE LADY X087
MARX ALMIGHTY 811 3KG
IDEAL 527 OF 1576 121

BW	WW	YW	HP	MILK	MARB	REA	SM	SF	SG	SB	ACT BW
+5.4	+62	+120	+14.2	+41	+38	+60	+53	+86	+40	+126	98

- His mom is a powerful cow with 4 @103
- Lots of potential in this Uno
- Top 30% \$Wean

ADJ 205
702
DISP
1



Hoos Uno 074

077

Hoos Hesston 077

03/03/20 • REG: #19875919 • 077B

S A V HESSTON 2217
DOUBLE R BAR HESSTON D180
THUNDERFOOT EVERELDA Z288

S A V HARVESTOR 0338
S A V EMBLYNETTE 3301
SOO LINE MOTIVE 9016
C&H EVER ENTENSE 3210

SUMMITCREST FOCUS 2U66
HOOS IDA 519
HOOS IDA 331

MYTTY IN FOCUS
SUMMITCREST ELBA 1M17
CONNEALY RESPONSE
HOOS IDA D37 OF 537

BW	WW	YW	HP	MILK	MARB	REA	SM	SF	SG	SB	ACT BW
-1.4	+45	+77	+10.1	+27	+50	+51	+51	+66	+43	+109	75

- Heifer Bull
- Nice little head and smooth made

ADJ 205
630
DISP
2

078

Hoos Hesston 078

03/04/20 • REG: #19875920 • 078B

S A V HESSTON 2217
DOUBLE R BAR HESSTON D180
THUNDERFOOT EVERELDA Z288

S A V HARVESTOR 0338
S A V EMBLYNETTE 3301
SOO LINE MOTIVE 9016
C&H EVER ENTENSE 3210

SUMMITCREST FOCUS 2U66
HOOS EVERELDA ENTENSE 302
HOOS EVERELDA ENTENSE 159

MYTTY IN FOCUS
SUMMITCREST ELBA 1M17
MARX ALMIGHTY 811 3KG
HOOS 630 EVERELDA ENTENSE

BW	WW	YW	HP	MILK	MARB	REA	SM	SF	SG	SB	ACT BW
+9	+67	+118	+7.3	+22	+57	+48	+52	+78	+45	+124	83

- Excellent type and kind with some added depth
- Top 25% \$Wean

ADJ 205
703
DISP
2

076

Hoos Energizer 076

03/03/20 • REG: #19875918 • 076B

IDEAL 4545 OF 7451 6224
IDEAL 8561 OF 4545 4704
IDEAL 4704 OF 2300 2358

IDEAL 7451 OF 8103 4465
IDEAL 6224 OF 306 4231
IDEAL 2300 OF T510 3401
IDEAL 2358 OF 7573 759

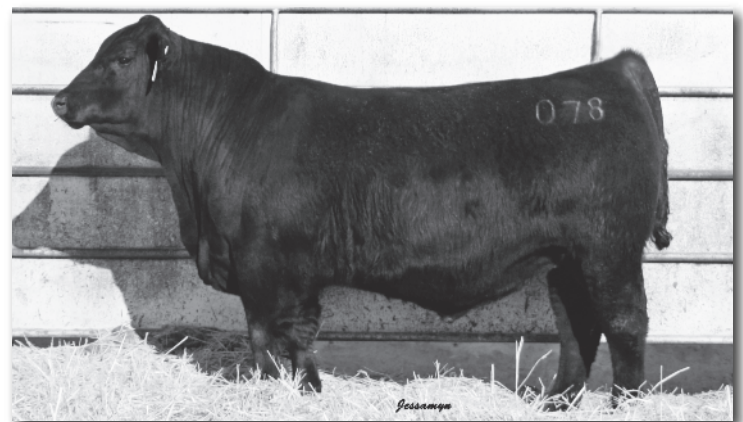
DOUBLE R BAR RITO Y188
HOOS PRINCESS 671
HOOS 070 OF 832T 019

S A V 707 RITO 9969
WHITESTONE LADY X087
LAR IMAGE 832T
IDEAL 019 OF 5439 514

BW	WW	YW	HP	MILK	MARB	REA	SM	SF	SG	SB	ACT BW
+3.9	+37	+61	+12.3	+27	+02	+07	+57	+39	+17	+56	80

- His mother is the dam of Hoos Core Values 861 that you will see a lot of in the future.
- A real angular and clean made 8561 that will grow into a good one

ADJ 205
656
DISP
1



Hoos Hesston 078

079

Hoos Uno 079

03/04/20 • REG: #19875921 • 079B

C C A UNO 049
BR UNO 803 OF 905
IDEAL 905 OF 3542 705

SITZ UPWARD 307R
MYTTY COUNTESS 906
IDEAL 3542 OF 7451 7417
IDEAL 705 OF ONWARD 214

IDEAL 0748 OF 332 JILT
HOOS ELBA 522
MARX BUBBA ELBA 0101

IDEAL 332 OF 049 8221
IDEAL 357 OF 745 0253
MARCYS 95 SUPREME 7
MARX 146 ELBA 9320

BW	WW	YW	HP	MILK	MARB	REA	SM	SF	SG	SB	ACT BW
+3.7	+67	+119	+10.3	+33	+38	+35	+64	+83	+34	+118	98
											ADJ 205
											712
											DISP
											2

- His phenotype is second to none
- Nice fronted, deep sided and thick
- Top 15% \$Wean



Hoos Uno 079

081

Hoos Uno 081

03/06/20 • REG: #19875923 • 081B

C C A UNO 049
BR UNO 803 OF 905
IDEAL 905 OF 3542 705

SITZ UPWARD 307R
MYTTY COUNTESS 906
IDEAL 3542 OF 7451 7417
IDEAL 705 OF ONWARD 214

IDEAL 0748 OF 332 JILT
HOOS NELLY 536
HOOS NELLY 208

IDEAL 332 OF 049 8221
IDEAL 357 OF 745 0253
KESSLERS FRONTMAN R001
HOOS NELLY 075

BW	WW	YW	HP	MILK	MARB	REA	SM	SF	SG	SB	ACT BW
+8	+64	+114	+9.0	+41	+21	+47	+46	+89	+31	+120	72
											ADJ 205
											686
											DISP
											1

- Should work on larger framed heifers or cows
- Another well designed Uno
- Top 4% \$Wean, 30% \$Feed

084

Hoos Marriott 084

03/09/20 • REG: #19875926 • 084B

MARRIOTT OF WR BAR 8055
TRW MARRIOTT 703
TR W ERICA 711 ALL 187 013

SKARSHIP SARATOGA
F W R 6298 LADY ELBAN 543
TR W ALLIANCE 187 711
TR W ERICA ALLIANCE 6164

S A V PROSPERITY 9131
HOOS LADY 817
IDEAL 6313 OF 2Q23 4633

S A V PROVIDENCE 6922
S A V EMBLYNETTE 3123
SINCLAIR OPEN RANGE 2Q23
IDEAL 4633 OF 452 281

BW	WW	YW	HP	MILK	MARB	REA	SM	SF	SG	SB	ACT BW
+1.4	+61	+96	+9.8	+17	+02	+51	+56	+73	+23	+97	78
											ADJ 205
											642
											DISP
											1

- Also a bull that maybe could be used on larger heifers - Your decision
- A good bull with some width and muscle in his rear end

082

Hoos Amos JR 082

03/07/20 • REG: #19875924 • 082B

HOOS AMOS 910
HOOS AMOS 836
HOOS DIXIE ERICA 209

IDEAL 3542 OF 7451 7417
IDEAL 328 OF 03 820

KESSLERS FRONTMAN R001
HOOS DIXIE ERICA 013

CONNEALY STINGRAY 9618
HOOS ETHELDA 611
HOOS ETHELDA 453

CONNEALY FINAL SOLUTION
POWA OF CONANGA 9618

IDEAL 1281 OF 6469 JILT
MARX PT DBL G ETHELDA 0211

BW	WW	YW	HP	MILK	MARB	REA	SM	SF	SG	SB	ACT BW
+1.1	+54	+91	+9.2	+21	+30	+30	+61	+70	+30	+100	90
											ADJ 205
											657
											DISP
											2

- A long spined Amos Grandson

085

Hoos Uno 085

03/14/20 • REG: #19875927 • 085B

C C A UNO 049
BR UNO 803 OF 905
IDEAL 905 OF 3542 705

SITZ UPWARD 307R
MYTTY COUNTESS 906

IDEAL 3542 OF 7451 7417
IDEAL 705 OF ONWARD 214

S R RESOURCE 415
HOOS BLACKBIRD 722
HOOS BLACKBIRD 335

S A V RESOURCE 1441
S R BLACKCAP 702

MARX ALMIGHTY 811 3KG
HOOS BLACKBIRD 005

BW	WW	YW	HP	MILK	MARB	REA	SM	SF	SG	SB	ACT BW
+2.7	+72	+126	+9.6	+24	-.12	+69	+66	+95	+20	+115	70
											ADJ 205
											675
											DISP
											1

- A good rascal - Find him
- Top 30% \$Maternal, 15% \$Wean, and 20% Feed

083

Hoos Compass 083

03/08/20 • REG: #19875925 • 083B

BALDRIDGE COMPASS C041
HOOS COMPASS 827
HOOS MISS KATEE 236

EF COMMANDO 1366
BALDRIDGE ISABEL Y69

MARX TRUE GRIT 946
HOOS MISS KATEE 054

S R RESOURCE 415
HOOS FOREVER LADY 807
HOOS FOREVER LADY 463

S A V RESOURCE 1441
S R BLACKCAP 702

DOUBLE R BAR RITO Y188
HOOS FOREVER LADY 724

BW	WW	YW	HP	MILK	MARB	REA	SM	SF	SG	SB	ACT BW
+1.3	+58	+105	+13.4	+18	+29	+58	+69	+85	+36	+121	74
											ADJ 205
											630
											DISP
											1

- A smooth made bull that should work on heifers - You make the call
- Top 25% \$Maternal



Hoos Uno 085

086

Hoos Energizer 086

03/14/20 • REG: #19875928 • 086B

IDEAL 4545 OF 7451 6224
IDEAL 8561 OF 4545 4704
IDEAL 4704 OF 2300 2358

IDEAL 7451 OF 8103 4465
IDEAL 6224 OF 306 4231
IDEAL 2300 OF T510 3401
IDEAL 2358 OF 7573 759

S A V INTERNATIONAL 2020
HOOS LADY 751
IDEAL 6313 OF 2Q23 4633

S A V HARVESTOR 0338
S A V EMBLYNETTE 5483
SINCLAIR OPEN RANGE 2Q23
IDEAL 4633 OF 452 281

BW	WW	YW	HP	MILK	MARB	REA	SM	SF	SG	SB	ACT BW
+2.5	+35	+61	+14.2	+27	+.05	+.07	+39	+49	+18	+67	78

• A longer bull out of the old boy!

ADJ 205
617
DISP
2

087

Hoos Compass 087

03/21/20 • REG: #19875929 • 087B

BALDRIDGE COMPASS C041
HOOS COMPASS 827
HOOS MISS KATEE 236

EF COMMANDO 1366
BALDRIDGE ISABEL Y69
MARX TRUE GRIT 946
HOOS MISS KATEE 054

JGM CORE VALUES 5G11
HOOS BLACKBIRD 855
HOOS BLACKBIRD 466

GDAR GAME DAY 449
JGM PROUD ERIKA 1H1
DOUBLE R BAR RITO Y188
HOOS 178 OF ALMIGHTY 527

BW	WW	YW	HP	MILK	MARB	REA	SM	SF	SG	SB	ACT BW
-1.2	+50	+90	+11.8	+24	+.65	+.73	+69	+66	+53	+120	69

• Heifer bull
• Top 25% \$Maternal and 30% \$Grid

ADJ 205
697
DISP
2

088

Hoos Energizer 088

03/17/20 • REG: #19875930 • 088B

IDEAL 4545 OF 7451 6224
IDEAL 8561 OF 4545 4704
IDEAL 4704 OF 2300 2358

IDEAL 7451 OF 8103 4465
IDEAL 6224 OF 306 4231
IDEAL 2300 OF T510 3401
IDEAL 2358 OF 7573 759

S A V RENOWN 3439
HOOS ERICA 715
HOOS ERICA 152

RITO 707 OF IDEAL 3407 7075
S A V BLACKCAP MAY 4136
MARX 0211 DBL G NEW B 713
HOOS ERICA 716

BW	WW	YW	HP	MILK	MARB	REA	SM	SF	SG	SB	ACT BW
+4.7	+54	+94	+10.2	+18	-.11	+.39	+45	+62	+15	+77	83

• Clean made, deep sided, super sound 8561

ADJ 205
607
DISP
2

089

Hoos Marriott 089

03/18/20 • REG: #19875931 • 089B

MARRIOTT OF WR BAR 8055
TRW MARRIOTT 703
TR W ERICA 711 ALL 187 013

SKARSHIP SARATOGA
F W R 6298 LADY ELBAN 543
TR W ALLIANCE 187 711
TR W ERICA ALLIANCE 6164

HOOS RESOURCE 502
HOOS HAZE 812
ALC HAZEL P92P

S A V RESOURCE 1441
IDEAL 507 OF 7451 806
H A R B HIGH PLAINS 975 JH
ALC HAZEL L12L

BW	WW	YW	HP	MILK	MARB	REA	SM	SF	SG	SB	ACT BW
+5	+49	+81	+9.5	+31	+.09	+.36	+62	+54	+21	+76	76

• Had a weaning ratio of 106 out of a real good Hoos Resource 502 momma

ADJ 205
688
DISP
2

091

Hoos Marriott 091

03/24/20 • REG: #19875932 • 091B

MARRIOTT OF WR BAR 8055
TRW MARRIOTT 703
TR W ERICA 711 ALL 187 013

SKARSHIP SARATOGA
F W R 6298 LADY ELBAN 543
TR W ALLIANCE 187 711
TR W ERICA ALLIANCE 6164

MARX ALMIGHTY 811 3KG
HOOS DORA 421
HOOS DORA 937

S R NEW DESIGN 5072
MARX PT DBL G ETHELDA 0211
WOODHILL STATESMAN 54K-90N
HOOS DORA 712

BW	WW	YW	HP	MILK	MARB	REA	SM	SF	SG	SB	ACT BW
+2.6	+48	+76	+7.2	+16	.25	+.31	+52	+64	+30	+94	97

• He should grow into a bigger framed bull

ADJ 205
779
DISP
2

092

Hoos Uno 092

03/26/20 • REG: #19875933 • 092B

C C A UNO 049
BR UNO 803 OF 905
IDEAL 905 OF 3542 705

SITZ UPWARD 307R
MYTTY COUNTESS 906
IDEAL 3542 OF 7451 7417
IDEAL 705 OF ONWARD 214

HOOS REGISTRY 511
HOOS BLACKBIRD 746
HOOS BLACKBIRD 530

S A V REGISTRY 2831
IDEAL 608 OF 338 022
SINCLAIR ADDED VALUE 5PV44
HOOS 337 OF 0748 319

BW	WW	YW	HP	MILK	MARB	REA	SM	SF	SG	SB	ACT BW
+4	+64	+115	+9.8	+22	+.52	+.57	+48	+88	+45	+133	73

• His mom is off to a great start with 2 @110 for weaning
• Top 35% \$Wean and 35% \$Feed

ADJ 205
724
DISP
1



Hoos Uno 092

093

Hoos Hesston 093

03/26/20 • REG: #19875934 • 093B

MARRIOTT OF WR BAR 8055
TRW MARRIOTT 703
TR W ERICA 711 ALL 187 013

S A V HESSTON 2217
DOUBLE R BAR HESSTON D180
THUNDERFOOT EVERELDA Z288

S A V HARVESTOR 0338
S A V EMBLYNETTE 3301
SOO LINE MOTIVE 9016
C&H EVER ENTENSE 3210

HOOS RESOURCE 502
HOOS HAZE 812
ALC HAZEL P92P

IDEAL 0748 OF 332 JILT
HOOS BLACKBIRD 500
IDEAL 501 OF 9126 319

IDEAL 332 OF 049 8221
IDEAL 357 OF 745 0253
WAR ALLIANCE 9126 6006
IDEAL 319 OF 03 121

BW	WW	YW	HP	MILK	MARB	REA	SM	SF	SG	SB	ACT BW
+1.8	+68	+123	+10.1	+44	+.54	+.36	+50	+96	+41	+137	83

• Rangey (if that's a word) bull that should add some performance
• Top 3% \$Wean and 20% \$Feed

ADJ 205
729
DISP
2



Heb/hoos Waylon 600

K Heb/hoos Waylon 600

02/06/2016 • REG: #18685888 • 600

GAR-EGL PROTEGE
BALDRIDGE WAYLON W34
BALDRIDGE BLACKCAP T163

RITO 112 OF 2536 RITO 616
L B 6807 ISABEL 339

WOODHILL FORESIGHT
BALDRIDGE BLACKCAP P326

SITZ ALLIANCE 6595
MARCYS 07 PRIDE 54-7
MARCYS 98 PRIDE 8-8

SITZ TRAVELER 8180
SITZ BARBARAMERE JET 2698

RITO 054 G D A R
MARCYS 93 PRIDE 5

BW	WW	YW	HP	MILK	MARB	REA	SM	SF	SG	SB
+3.1	+57	+96	+4.6	+25	+46	+68	+51	+83	+47	+130

Kevin Hebbert bought his donor dam from Marcy Cattle Co. A very powerful and productive female. I bought an interest from Kevin on this bull when he was a calf. We are excited to involve these genetics into our program.

094

Hoos Waylon 094

03/27/20 • REG: #19875935 • 094B

BALDRIDGE WAYLON W34
HEB/HOOS WAYLON 600
MARCYS 07 PRIDE 54-7

GAR-EGL PROTEGE
BALDRIDGE BLACKCAP T163

SITZ ALLIANCE 6595
MARCYS 98 PRIDE 8-8

CONNEALY STINGRAY 9618
HOOS DORA 617
HOOS DORA 421

CONNEALY FINAL SOLUTION
POWA OF CONANGA 9618

MARX ALMIGHTY 811 3KG
HOOS DORA 937

BW	WW	YW	HP	MILK	MARB	REA	SM	SF	SG	SB	ACT BW
+4.6	+72	+119	+5.5	+25	+36	+48	+50	+66	+37	+123	93

- The adjusted weaning weight champ
- Going to be a bigger bull.
- Top 25% \$Wean

ADJ 205
800
DISP
2

097

Hoos Energizer 097

03/30/20 • REG: #19875938 • 097B

IDEAL 4545 OF 7451 6224
IDEAL 8561 OF 4545 4704
IDEAL 4704 OF 2300 2358

IDEAL 7451 OF 8103 4465
IDEAL 6224 OF 306 4231

IDEAL 2300 OF T510 3401
IDEAL 2358 OF 7573 759

MARX ALMIGHTY 811 3KG
HOOS LADY 534
SINCLAIR LADY 7P40 0S21

S R NEW DESIGN 5072
MARX PT DBL G ETHELDA 0211

N BAR PRIME TIME D806
MAJESTY 0S21 OF 353 4465

BW	WW	YW	HP	MILK	MARB	REA	SM	SF	SG	SB	ACT BW
+2.7	+37	+63	+11.6	+21	+07	+06	+67	+40	+19	+58	84

- Younger 8561 son
- Ranks in the top 30% for \$Maternal

ADJ 205
671
DISP
1

095

Hoos Compass 095

03/28/20 • REG: #19875936 • 095B

BALDRIDGE COMPASS C041
HOOS COMPASS 827
HOOS MISS KATEE 236

EF COMMANDO 1366
BALDRIDGE ISABEL Y69

MARX TRUE GRIT 946
HOOS MISS KATEE 054

CONNEALY EARNAN 076E
HOOS LADY 835
IDEAL 6313 OF 2Q23 4633

CONNEALY CONSENSUS
BRAZILA OF CONANGA 3991 839A

SINCLAIR OPEN RANGE 2Q23
IDEAL 4633 OF 452 281

BW	WW	YW	HP	MILK	MARB	REA	SM	SF	SG	SB	ACT BW
+6.8	+79	+133	+13.5	+19	+32	+27	+47	+94	+31	+125	99

- Younger bull that will add length

ADJ 205
684
DISP
2

099

Hoos Amos JR 099

04/03/20 • REG: #19875939 • 099B

HOOS AMOS 910
HOOS AMOS 836
HOOS DIXIE ERICA 209

IDEAL 3542 OF 7451 7417
IDEAL 328 OF 03 820

KESSLERS FRONTMAN R001
HOOS DIXIE ERICA 013

DOUBLE R BAR RITO Y188
HOOS BLACKBIRD 458
HOOS BLACKBIRD 185

S A V 707 RITO 9969
WHITESTONE LADY X087

MARX ALMIGHTY 811 3KG
HOOS BLACKBIRD 83

BW	WW	YW	HP	MILK	MARB	REA	SM	SF	SG	SB	ACT BW
+8	+34	+73	+11.7	+28	-.08	+35	+56	+80	+15	+96	78

- He is missing his fly swatter and I think that makes his butt look bigger

ADJ 205
613
DISP
2

096

Hoos Waylon 096

03/29/20 • REG: #19875937 • 096B

BALDRIDGE WAYLON W34
HEB/HOOS WAYLON 600
MARCYS 07 PRIDE 54-7

GAR-EGL PROTEGE
BALDRIDGE BLACKCAP T163

SITZ ALLIANCE 6595
MARCYS 98 PRIDE 8-8

MARX TRUE GRIT 946
HOOS OLGA 242
G BAR H OLGA 0113

MARX 9723 SRT 601
MARX PT QUEEN NANCY 0313

CONNEALY INDUSTRY 5634
G BAR H OLGA P993

BW	WW	YW	HP	MILK	MARB	REA	SM	SF	SG	SB	ACT BW
+3.9	+60	+108	+4.5	+30	+26	+50	+31	+74	+35	+108	89

- Bigger, growthy bull that I think will add some frame

ADJ 205
779
DISP
2

0100

Hoos Uno 0100

04/08/20 • REG: #19875940 • 0100B

C C A UNO 049
BR UNO 803 OF 905
IDEAL 905 OF 3542 705

SITZ UPWARD 307R
MYTTY COUNTESS 906

IDEAL 3542 OF 7451 7417
IDEAL 705 OF ONWARD 214

MARX ALMIGHTY 811 3KG
HOOS EVERELDA ENTENSE 631
HOOS EVERELDA ENTENSE 631

S R NEW DESIGN 5072
MARX PT DBL G ETHELDA 0211

IDEAL 0748 OF 332 JILT
HOOS EVERELDA ENTENSE 800

BW	WW	YW	HP	MILK	MARB	REA	SM	SF	SG	SB	ACT BW
+4.5	+53	+100	+10.3	+32	+29	+08	+54	+59	+25	+84	92

- I think the Uno calves are going to be pretty popular
- Here is a younger one

ADJ 205
692
DISP
2

0103

Hoos Waylon 0103

04/17/20 • REG: #19875941 • 0103B

BALDRIDGE WAYLON W34
HEB/HOOS WAYLON 600
MARCYS 07 PRIDE 54-7

GAR-EGL PROTEGE
BALDRIDGE BLACKCAP T163

SITZ ALLIANCE 6595
MARCYS 98 PRIDE 8-8

IDEAL 332 OF 049 8221
HOOS LADY 788
IDEAL 6313 OF 2Q23 4633

IDEAL 049 OF F506 6375
IDEAL 8221 OF 5439 4517

SINCLAIR OPEN RANGE 2Q23
IDEAL 4633 OF 452 281

BW	WW	YW	HP	MILK	MARB	REA	SM	SF	SG	SB	ACT BW
+2.7	+58	+116	+8.2	+34	+49	+40	+47	+88	+43	+131	89

- Youngest bull in the sale but he will grow
- Ranks in the top 35% \$Wean and 35% \$Feed

ADJ 205
737
DISP
1



Matt, Megan & Tyce Harkless

01

DM Bomber 01

02/27/2020 • REG: #Pending • 01

KM BROKEN BOW 002
CASINO BOMBER N33
CASINO ANNIE K48

SUMMITCREST COMPLETE 1P55
SUMMITCREST PRINCESS OP12

DPL UPWARD L70
CASINO ANNIE G64

SUA WAYLON 4196
SUA WAYLON OPAL 7457
SUA EMULOUS OPAL 2315

BALDRIDGE WAYLON W34
SUA 50 OF CANYON DORA 6068

CONNELLY CONSENSUS 7229
ROBBINS EMULOUS OPAL 6111

BW	WW	YW	HP	MILK	MARB	REA	SM	SF	SG	SB	ACT BW
+9	+71	N/A	N/A	N/A	N/A	N/A	N/A	N/A	N/A	N/A	90

- This bull comes from Matt & Megan Harkless and Dave Jennings
- They purchased his mom from the Spear U dispersion
- This Bomber should add pounds

ADJ 205
N/A
DISP
1

02

DM Raindance 02

03/14/2020 • REG: #19946910 • 02

COLEMAN CHARLO 0256
S A V RAINDANCE 6848
S A V BLACKCAP MAY 4136

O C C PAXTON 730P
BOHI ABIGALE 6014

S A V 8180 TRAVELER 004
S A V MAY 2397

BASIN PAYWEIGHT 1682
SUA PAYWEIGHT MISS 7415
SUA MISS CONSENSUS 2300

BASIN PAYWEIGHT 006S
21AR O LASS 7017

CONNELLY CONSENSUS 7229
SUA LEGEND OF GEORGINA W9302

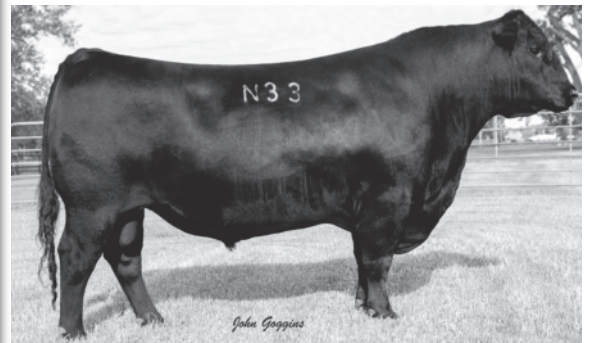
BW	WW	YW	HP	MILK	MARB	REA	SM	SF	SG	SB	ACT BW
+1.4	+59	+118	N/A	+20	N/A	N/A	+63	+94	N/A	N/A	75

- Harkless & Jennings bull, they purchased his Mom last fall from Spear U
- This younger Raindance son is attractive
- He should add length and thickness

ADJ 205
685
DISP
2



**Left: DM Bomber 01
Pictured Below Reference Sire
Casino Bomber N33**



**Right: DM Raindance 02
Pictured Below Reference Sire
S A V Raindance 6848**



Semen is available on these HoosCow Sires



Hoos Blackcat 361 #17630251

- He ranks in the Top 15% for \$Wean and top 10% \$Feed
- A real complete bull with progeny averaging 98 @ Birth, 102 @ Weaning, 103 @ Yearling, 102 for IMF, and 101 for REA, with his daughter have a nursing ratio of 101
- He is a bull that will add length and depth
- Owned with Pieper Land & Livestock



Hoos Incentive 708 TE43 #18906761

- The performance king with progeny averaging 105 at Weaning, 105 at Yearling and 110 for REA
- He ranks in the 2% for \$Feed and 10% \$Beef
- His progeny are extremely thick and he will add length
- Owned with Steve & Carol Balius



Hoos Resource 502 #18287682

- His dam was a moderate framed, massive cow that excelled for production in our environment
- His progeny are moderate framed with a lot natural shape
- He will improve udders and add fleshing ability to his daughters
- Owned with Kevin Hebbert



Hoos Powerpoint 948 #19552912

- One of the top calving ease prospects we have raised, with first calves coming this spring
- He ranks in the top 20% for Heifer Pregnancy, 4% for Marbling, top 3% \$Maternal, 20% \$Wean, 10% \$Grid & 30% \$Beef
- Owen with Chris McClaren

Contact Us for Prices!

HoosCow Angus

Judd & Brandy Hoos
PO Box 751
Rushville NE 69360

HoosCow ANGUS BULL SALE

Tuesday
FEBRUARY 16, 2021



DM Bomber 01



DM Raindance 02



Hoos Beast Mode 012



Hoos Uno 079